



BACKGROUND INFORMATION ABOUT THE DISTRICT

Jharkhand was carved out of Bihar as the 28th State of Indian Republic on 15th Nov., 2000. It has 5 divisions and 24 districts.

Bokaro District, an amalgam of portions of Dhanbad and Giridih was created in the year 1991. Located in the sprawling and luxuriant Chotanagpur Plateau, Bokaro is situated between latitude 23°24'34" N to 23°59'05" N & longitude 85°35'00" E to 86° 38'47" E and occupies an area of 2821 Sq. km.

Bokaro has small river which flows into the Konar, a tributary of Damodar. A village by the name of Bokaro lies on the northern bank of the Konar. It is here that Bokaro Thermal Power Station of the Damodar Valley Corporation (DVC) is located. The Tenughat Dam, which is the source of industrial water for the steel plant rises on the Damodar. The Dam on the Garga is the source of drinking water for the steel city is to the south of Tenughat at an aerial distance of about 27 Kms. BSL is located on the site where formerly a village by the name of Maraphari existed. It was connected to a railway station also known as Maraphari on the Muri Chandrapura line of the south eastern railway. With the coming up of the Steel Plant the station was renamed as Bokaro Steel City. The Govt. Of India & Bihar and Bokaro Steel Limited at a meeting on Sep 12, 1964 decided to name the steel township as Bokaro Steel City.

3.1 General Information of the District

Table No. 3.1

Sl no.	Name of the Sub-Division	Name of the Block	Nearest Railway Station	Area Sq. Km	No. of Panchyat	No. of Village
1	Chas	Chas	Bokaro Steel City	573.60	54	154
		Chandankyari	Bhojudih	370.70	38	133
2	Bermo	Jaridih	Tupkadih	207.50	17	42
		Kasmar	Tupkadih	195.30	15	68
		Peterwar	Ranchi Road	305.80	23	63
		Gomia	Gomia	630.60	36	132
		Bermo	Bermo	165.70	33	43
		Nawadih	Gomia	371.80	32	83
		Total :-		2821.00	248	718

Urban Area

1. Bokaro Steel City is a big town owned by SAIL, Bokaro Steel City Plant
2. Chas is municipal town
3. Phusro Bazar is notified as Urban Area.

Apart from the above Urban areas the following areas are also urbanized viz.

Jaina More (Jaridih Block Head Quarter)
 Petarwar Block Head Quarter
 Gomia Block Head Quarter
 Bermo (Phusro) Head Quarter
 Chandrapura Panchayat Head Quarter
 Bokaro Tehrmal Panchayat Head Quarter
 Dugda Panchayat Head Quarter

Other Significant Land Marks	
1	The SAIL has their Gaint Steel Plant at Bokaro.
2	The CIL has their Mining Subsidiaries like CCL and BCCL in the district.
3	The DVC has also their Power 3 Plants Viz Chandrapura Thermal, Bokaro Thermal and Bokaro Steel Thermal.
4	Apart from the DVC the state Govt. has also on power thermal in the district.

A Part from the above land mark the Bharat Refractories limited a Govt. of India under taking has its corporate office at Bokaro and their refractories plants.

Bokaro is an important Railway station of south Eastern Railway.

3.2 Distance of Sub-Divisional Head Quarter & Block Head Quarter from Bokaro

Table No. 3.2

Sl.	From	To (HQR)	Killo Mitter
1	Bokaro	Chas Sub-Divisional	12
2	Bokaro	Bermo at Tenughat Sub-Divisional	60
3	Bokaro	Chas Block	09
4	Bokaro	Chandankyari Block	37
5	Bokaro	Jaridih Block	18
6	Bokaro	Kasmar Block	35
7	Bokaro	Peterwar Block	35
8	Bokaro	Gomia Block	70
9	Bokaro	Bermo Block	30
10	Bokaro	Nawadih Block	55

3.3 Distance of Sub-Divisional Head Quarter & Block Head Quarter from Bokaro

Sl.	From	To (HQR)	Killo Mitter
1	Bokaro	Chas Sub-Divisional	12
2	Bokaro	Bermo at Tenughat Sub-Divisional	60
3	Bokaro	Chas Block	09
4	Bokaro	Chandankyari Block	37
5	Bokaro	Jaridih Block	18
6	Bokaro	Kasmar Block	35
7	Bokaro	Peterwar Block	35
8	Bokaro	Gomia Block	70
9	Bokaro	Bermo Block	30
10	Bokaro	Nawadih Block	55

3.2 Demography Pattern

The total area of the district is 2821 sqkm and total population of the district is **1775961** as per 2001 census with a population density of 508 person/sqkm . The district and block wise area and Demographic pattern of district is given bellow.

3.4 Demography Pattern of Bokaro District

<i>DEMOGRAPHY</i>	
Total Population of the District (As per Projected Census 2001)	1775961
Total Population Male	937188
Total Population of Female	838773
Total Rural Population	970020
Total Population of Rural Male	503625
Total population of Rural Female	466395
Total Urban Population	838641
Total Population of Urban Male	431870
Total Population of Urban Female	406771
Density of Population	508 person/sqkm
Total Population of Cultivators	97991
Total Population of Agricultural Laborers	41684
Total No. of Panchayt	248
Total No. of Revenu village	718

3.5 Population Block wise in Bokaro District

Blocks	No. of House Hold	Total Population	SC Population	ST Population	Others
Nawadih	25964	158091	18137	17162	122792
Bermo	46393	250399	32115	17097	201187
Gumia	35533	198524	23903	36165	138456
Peteruar	20499	113635	15929	33835	63871
Kasmar	13674	76221	7971	13782	54468
Jaridih	16385	88298	8732	27635	51931
Chas	125423	698625	85665	56597	556363
Chandankiyari	33507	193869	44020	16327	133522

3.6 Block Wise Population up to 6 years age

Blocks	Total	Male	Female
Nawadih	30447	15476	14971
Bermo	38430	19984	18446
Gumia	35765	18139	17626
Peteruar	20589	10439	10150
Kasmar	14383	7352	7031
Jaridih	15650	8020	7630
Chas	100918	52134	48784
Chandankiyari	34966	17782	17184

3.7 Block wise Sex Ratio in Bokaro

Blocks	Total population	Male	Female	Male female ratio
Nawadih	158091	81431	76660	941
Bermo	250399	134609	115790	860
Gumia	198524	102413	96111	938
Peteruar	113635	59295	54340	916
Kasmar	76221	39329	36892	938
Jaridih	88298	46143	42155	914
Chas	698625	374202	324423	867
Chandankiyari	193869	101014	92855	919

3.3 Literacy

The literacy rate of the district is 62.98% in which male literacy rate is 76.99% and Female literacy is 47.17%.

3.8 Block wise Literacy in Bokaro

Sl No	Block	Male	Female	Total	SC			ST		
					Male	Female	Total	Male	Female	Total
1	Chas	84.6	58.9	72.7	12.2	12.4	12.3	7.8	8.4	8.1
2	Chandankiyari	67.5	29.5	49.4	22.6	22.8	22.7	8.3	8.6	8.4
3	Jaridih	70.9	35.6	54.1	9.8	10.0	9.9	30.4	32.3	31.3
4	Kasmar	64.7	29.0	47.4	10.7	10.2	10.45	18.1	18.1	18.1
5	Petarbar	61.4	28.8	45.9	13.9	14.1	14.0	29.5	30.0	29.7
6	Gomia	66.3	35.8	51.6	12.1	11.9	12.0	17.9	18.6	18.2
7	Bermo	82.9	59.6	72.2	12.5	13.2	12.85	6.6	7.1	6.8
8	Nawadih	65.0	30.2	48.2	11.5	11.4	11.45	10.7	11.0	10.8
	Total:-	76.99	47.17	62.98	13.2	13.4	13.2	12.0	12.7	16.4

3.4 Educational Status

Sarva Shiksha Abhiyan aims to bring all the children in the 6-14 age group under the umbrella of useful and relevant elementary education by 2010. It is an initiative to universalize and improve quality of education through decentralized and context specific planning and process based, time bond implementation strategy. The programme lays emphasis on bridging all gender and social gaps at the elementary education level with bond objectives.

3.9 EDUCATION SCEDRARIO OF THE DISTRICT IN THE TABULAR FROM :

<i>Literacy Rate (Total) (census 2001)</i>		62.98%
<i>Male Literacy Rate (census 2001)</i>		76.99%
<i>Female Literacy Rate (census 2001)</i>		47.17%
<i>Total Population (6-11) age group</i>	<i>Boys</i>	151561
	<i>Girls</i>	147740
	<i>Total</i>	299301
<i>Total Population (11-14) age group</i>	<i>Boys</i>	54697
	<i>Girls</i>	52232
	<i>Total</i>	106929
<i>Total Population (6-14) age group</i>	<i>Boys</i>	206258
	<i>Girls</i>	199972
	<i>Total</i>	406230
<i>Total Enrolment (6-11) age group</i>	<i>Boys</i>	151145
	<i>Girls</i>	147347
	<i>Total</i>	298492
<i>Total Enrolment (11-14) age group</i>	<i>Boys</i>	53256
	<i>Girls</i>	50855
	<i>Total</i>	10411
<i>Total Enrolment (6-14) age group</i>	<i>Boys</i>	204401
	<i>Girls</i>	198202
	<i>Total</i>	402603
<i>Total out of school (6-11) age group</i>	<i>Boys</i>	416
	<i>Girls</i>	393
	<i>Total</i>	809
<i>Total out of school (11-14) age group</i>	<i>Boys</i>	1441
	<i>Girls</i>	1377
	<i>Total</i>	2818
<i>Total out of school (6-14) age group</i>	<i>Boys</i>	1857
	<i>Girls</i>	1770
	<i>Total</i>	3627
<i>No of Govt. Primary schools</i>		1133
<i>No of Govt. Aided primary School</i>		01
<i>No of Basic school</i>		04
<i>No of Govt. Middle School</i>		524
<i>No of Aided Middle School</i>		03
<i>No of Govt. High School having elementary classes</i>		13
<i>No of Aided High School having elementary classes (As on 31.01.2009)</i>		03
<i>No. of Madarsa</i>		11
<i>No of college</i>		08
<i>No of wards in Corporation/Municipalities</i>		46
<i>No. of functional BRC</i>		08
<i>No. of function post CRC</i>		101
<i>No. of Sanction post of teacher (Govt.)</i>		2702
<i>No. of teachers in position</i>		2132
<i>No. of Para Teachers</i>		4336
<i>No. of functional VEC</i>		1668

3.4 Occupation

Block wise work force engaged in different occupations are given in table 3.10

Table No.3.10: Block wise Worker Classification

<i>Blocks</i>	<i>Total Worker</i>	<i>Main</i>					<i>Marginal</i>					<i>Non Worker</i>
		<i>Worker</i>	<i>Cultivator</i>	<i>Agricultural Labour</i>	<i>House Hold Worker</i>	<i>Others worker</i>	<i>Marginal Worker</i>	<i>Cultivator</i>	<i>Agricultural Labour</i>	<i>House Holdd worker</i>	<i>Other worker</i>	
Nawadih	49074	22571	8837	2235	1296	10203	26503	8993	11272	787	5451	109017
Bermo	61489	53177	1972	460	675	50070	8312	1163	1150	390	5609	188910
Gomia	61054	35311	12336	3125	1576	18274	25743	6288	12919	1080	5456	137470
Peterbar	42248	23319	9548	4015	1155	8601	18929	4510	10267	1571	2581	71387
Kasmar	25631	13406	7180	2724	651	2851	12225	3461	6824	368	1572	50590
Jaridih	29115	17144	4415	2708	797	9224	11971	3160	5814	326	2671	59183
Chas	180059	138987	17015	8191	4435	109346	41072	9487	15915	2060	13610	518566
Chandankiyari	60640	32216	13240	5274	1750	11952	28424	7249	15135	1484	4556	133229

3.5:- Land Utilization :

Bokaro district has reported geographical area of 278520.03 ha. The land Utilization pattern of different blocks of Bokaro district is given in table No-3.11

3.11- Land use Pattern of the District (in ha.)

<i>Sl No</i>		<i>Chas</i>	<i>Chandankiyari</i>	<i>Jaridih</i>	<i>Kasmar</i>	<i>Peterbar</i>	<i>Gomia</i>	<i>Bermo</i>	<i>Nawadih</i>	<i>Total</i>
1	Geographical area	56622.41	36648.20	20759.54	19302.04	30217.76	65741.20	16554.34	32675.41	278520.03
2	Forest area	3258.90	1088.76	5201.56	5332.01	926.73	31096.67	5190.60	1148.70	53243.03
3	Uncultivable waste land	18259.38	5725.56	1494.15	1105.60	2285.00	4994.00	2654.10	1914.27	59632.06
4	Pasture land	1062.29	46.09	72.08	178.05	2287.64	947.58	165.12	541.31	5303.16
5	Cultivable waste land	2842.87	3270.56	698.70	2020.07	2285.77	3248.47	382.18	1103.52	15882.14
6	Land for plantation	629.29	11.27	4.60	57.94	152.00	568.33	1512.84	331.95	3268.22
7	Total follow land	3014.94	1526.87	6652.77	1005.23	4044.36	12959.54	2437.36	15471.36	47112.46
8	Actual cultivated area Don-I	1742.98	2260.00	785.90	720.00	815.00	710.00	1382.00	1747.00	10161.98
	Don- II	3570.89	3390.00	890.00	840.94	945.00	615.00	820.00	2690.00	13761.83
	Don-III	6096.13	5646.00	920.00	1150.00	1200.00	890.00	380.00	3997.00	20279.13
	Total Don	11410.00	11296.00	2595.90	2710.94	2960.00	2215.00	2582.00	8434.00	44203.84
	Tanr-I	914.73	450.00	425.00	1479.00	1658.00	1875.00	329.54	728.03	7859.30
	Tanr-II	2156.04	3209.00	915.00	1600.00	1800.00	1700.00	98.41	1285.00	12763.45
	Tanr-III	7340.76	4461.00	1210.00	2500.00	2700.00	1900.00	334.48	1717.00	23063.24
	Total Tanr	10411.53	8121.44	2550.00	5579.00	6158.00	5475.00	762.43	3730.03	42787.43
	Total actual cultivated area	21821.53	19417.44	5145.00	8289.94	9118.00	7690.00	3344.43	12164.03	86900.37
9	Total irrigated area	2182.10	1941.70	514.50	828.90	911.80	769.00	334.40	1216.40	8698.80

3.6 Operational Holding- The details of family size and land holding pattern are given in the following table.

3.12- Land holding pattern of Bokaro District

Sl No.	Operational holding		Number
1	Number of Holding (000)	:	116.41
2	Average Size of Holding (Hectare/holding)	:	1.18
3	Marginal farmer's holding less then 1 ha (Noin 000)	:	81.49
4	Small & Medium farmer 1 ha to less than 4 ha (No in 000)	:	30.64
5	Large farmer, holding 4 ha. more	:	4.28

3.7 Climate

The district has climatic condition slightly different because of less elevation and less forest cover. The summer is hot and winter is cold. The highest temperature is recorded as 46°C. In winter season temperature comes down to 3°C to 4°C when cold wind blows, otherwise the temperature ranges between 10 to 15°C. The average rainfall is 1275 mm.

Rain fall

3.13 Month wise Rainfall (in mm) for last 5 Year (2004-2008)

Month	Year				
	2004	2005	2006	2007	2008
January	0.0	0.0	0.0	0.0	0.0
February	0.0	15.9	0.0	0.0	0.0
March	0.0	0.0	13.6	0.0	0.0
April	1.5	0.8	20.1	27.2	0.0
May	4.1	21.3	137.4	33.6	30.4
June	156.4	83.0	167.0	67.4	437.6
July	195.2	256.3	362.9	528.0	509.9
August	311.5	186.0	334.5	452.2	318.7
September	147.3	110.2	311.2	352.4	154.3
October	91.2	62.6	10.2	25.9	0.0
November	0.0	6.0	0.0	0.0	0.0
December	0.0	0.0	0.0	0.0	0.0
Mean	907.2	742.1	1356.9	1459.7	1450.9

3.14 Block wise Rainfall Distribution for Five Year (2004-2008)

Block:- Chas

Year	Month												Total
	January	February	March	April	May	Jun	July	August	September	October	November	December	
2004	0.0	0.0	0.0	8.6	20.0	92.8	230.0	287.0	219.4	72.8	0.0	0.0	930.6
2005	0.0	22.6	0.0	0.0	31.0	44.9	241.6	189.6	111.6	80.4	13.4	0.0	735.1
2006	0.0	0.0	18.2	42.8	121.8	161.5	457.4	446.2	300.2	0.0	0.0	0.0	1548.1
2007	0.0	0.0	0.0	35.1	41.6	42.4	587.2	446.2	408.8	25.0	0.0	0.0	1586.3
2008	0.0	0.0	0.0	0.0	36.0	510.0	385.8	213.8	147.9	0.0	0.0	0.0	1293.5

Block:- Chandankiyari

Year	Month												Total
	January	February	March	April	May	Jun	July	August	September	October	November	December	
2004	0.0	0.0	0.0	0.0	0.0	173.0	234.8	138.2	56.6	48.8	0.0	0.0	651.4
2005	0.0	12.6	0.0	0.0	21.8	52.7	114.0	11.5	98.0	60.2	4.8	0.0	375.6
2006	0.0	0.0	8.0	22.2	27.2	62.3	270.4	307.8	294.8	2.4	0.0	0.0	995.1
2007	0.0	0.0	0.0	24.6	20.6	36.5	469.0	682.2	287.8	0.0	0.0	0.0	1520.7
2008	0.0	0.0	0.0	0.0	10.0	258.0	449.0	149.0	89.0	0.0	0.0	0.0	955.0

Block:- Jaridih

Year	Month												Total
	January	February	March	April	May	Jun	July	August	September	October	November	December	
2004	0.0	0.0	0.0	0.0	0.0	46.4	80.6	376.5	186.4	121.4	0.0	0.0	1228.9
2005	0.0	8.7	0.0	0.0	7.0	24.2	186.0	158.2	70.6	44.6	2.6	0.0	501.9
2006	0.0	0.0	26.2	22.8	73.0	67.0	383.6	307.6	215.8	8.6	0.0	0.0	1104.6
2007	0.0	0.0	0.0	25.7	29.8	52.8	491.0	327.2	306.0	17.8	0.0	0.0	1250.3
2008	0.0	0.0	0.0	0.0	6.6	367.8	620.0	164.58	117.2	0.0	0.0	0.0	1276.2

Block:- Kasmar

Year	Month												Total
	January	February	March	April	May	Jun	July	August	September	October	November	December	
2004	0.0	0.0	0.0	0.0	5.6	78.0	156.2	308.2	118.6	76.8	0.0	0.0	743.4
2005	0.0	31.0	0.0	0.0	48.2	73.0	245.0	211.0	98.2	68.2	6.4	0.0	781.0
2006	0.0	0.0	12.2	16.2	67.0	96.6	297.8	303.3	311.7	10.2	0.0	0.0	1115.0
2007	0.0	0.0	0.0	22.2	34.4	55.6	346.7	268.4	363.8	11.4	0.0	0.0	1102.5
2008	0.0	0.0	0.0	0.0	20.1	342.0	520.8	39.1	252.7	0.0	0.0	0.0	1174.7

Block:- Peterbar

Year	Month												Total
	January	February	March	April	May	Jun	July	August	September	October	November	December	
2004	0.0	0.0	0.0	0.0	5.6	70.8	91.0	113.2	48.2	76.8	0.0	0.0	405.6
2005	0.0	11.6	0.0	0.0	16.6	27.0	162.0	110.4	89.3	9.5	3.2	0.0	429.6
2006	0.0	0.0	10.4	13.4	60.6	201.6	339.2	271.8	423.8	22.4	0.0	0.0	1343.2
2007	0.0	0.0	0.0	28.0	25.6	51.4	505.0	347.8	396.6	48.0	0.0	0.0	1403.4
2008	0.0	0.0	0.0	0.0	51.6	342.0	578.0	358.9	141.1	0.0	0.0	0.0	1471.6

Block:- Gomia

Year	Month												Total
	January	February	March	April	May	Jun	July	August	September	October	November	December	
2004	0.0	0.0	0.0	0.0	0.0	164.0	188.6	312.8	115.0	90.4	0.0	0.0	870.8
2005	0.0	17.4	0.0	6.4	39.1	137.95	323.2	318.3	151.2	47.3	6.8	0.0	1047.65
2006	0.0	0.0	12.4	11.2	132.4	212.6	533.6	267.6	441.6	11.4	0.0	0.0	1622.8
2007	0.0	0.0	0.0	20.6	37.8	66.0	467.1	302.9	158.3	27.6	0.0	0.0	1080.3
2008	0.0	0.0	0.0	0.0	23.8	431.7	408.6	328.4	158.4	0.0	0.0	0.0	1350.9

Block:- Bermo

Year	Month												Total
	January	February	March	April	May	Jun	July	August	September	October	November	December	
2004	0.0	0.0	0.0	0.0	0.0	358.0	311.4	563.8	270.8	172.0	0.0	0.0	1676.0
2005	0.0	9.8	0.0	0.0	4.7	233.0	444.0	267.2	148.4	93.8	8.6	0.0	1209.5
2006	0.0	0.0	10.0	14.4	286.8	227.8	626.8	480.3	364.8	17.6	0.0	0.0	2028.5
2007	0.0	0.0	0.0	20.2	43.0	196.8	981.3	782.0	582.2	61.6	0.0	0.0	2667.1
2008	0.0	0.0	0.0	0.0	48.1	784.8	562.4	473.0	215.9	0.0	0.0	0.0	2084.2

Block:- Nawadih

<i>Year</i>	<i>Month</i>												<i>Total</i>
	<i>January</i>	<i>February</i>	<i>March</i>	<i>April</i>	<i>May</i>	<i>Jun</i>	<i>July</i>	<i>August</i>	<i>September</i>	<i>October</i>	<i>November</i>	<i>December</i>	
<i>2004</i>	<i>0.0</i>	<i>0.0</i>	<i>0.0</i>	<i>3.2</i>	<i>7.5</i>	<i>268.4</i>	<i>269.6</i>	<i>392.5</i>	<i>163.4</i>	<i>126.3</i>	<i>0.0</i>	<i>0.0</i>	<i>1203.9</i>
<i>2005</i>	<i>0.0</i>	<i>13.2</i>	<i>0.0</i>	<i>0.0</i>	<i>2.4</i>	<i>71.5</i>	<i>344.6</i>	<i>121.7</i>	<i>111.4</i>	<i>96.3</i>	<i>2.3</i>	<i>0.0</i>	<i>763.4</i>
<i>2006</i>	<i>0.0</i>	<i>0.0</i>	<i>11.8</i>	<i>17.8</i>	<i>330.6</i>	<i>296.6</i>	<i>312.0</i>	<i>291.4</i>	<i>181.9</i>	<i>8.8</i>	<i>0.0</i>	<i>0.0</i>	<i>1450.9</i>
<i>2007</i>	<i>0.0</i>	<i>0.0</i>	<i>0.0</i>	<i>41.6</i>	<i>36.6</i>	<i>137.9</i>	<i>376.8</i>	<i>462.0</i>	<i>352.5</i>	<i>15.4</i>	<i>0.0</i>	<i>0.0</i>	<i>1422.8</i>
<i>2008</i>	<i>0.0</i>	<i>0.0</i>	<i>0.0</i>	<i>0.0</i>	<i>46.7</i>	<i>455.8</i>	<i>509.5</i>	<i>471.0</i>	<i>112.7</i>	<i>0.0</i>	<i>0.0</i>	<i>0.0</i>	<i>1595.7</i>

3.8 Soils

The soils occurring in different landforms have been characterised during soil resource mapping of the state on 1:250,000 scale (Halder et al. 1996) and three soil orders namely Entisols, Inceptisols and Alfisols were observed in Bokaro district (Fig.1 and Table 3.15). Alfisols were the dominant soils covering 62.0 percent of TGA followed by Inceptisols (21.4 %) and Entisols (12.7 %).

Table 3.15 Soils of the district and their extent

Map unit	Taxonomy	Area ('00ha)	% of TGA
15	Loamy-skeletal, mixed, hyperthermic Lithic Ustorthents Fine loamy, mixed, hyperthermic Ultic Haplustalfs	306	10.70
16	Fine, mixed, hyperthermic Typic Haplustalfs Loamy, mixed, hyperthermic Lithic Ustorthents	45	1.57
17	Loamy, mixed, hyperthermic Lithic Ustorthents Fine, mixed, hyperthermic Typic Rhodustalfs	48	1.68
18	Loamy, mixed, hyperthermic Lithic Ustorthents Fine loamy, mixed, hyperthermic Typic Haplustalfs	98	3.43
23	Fine-loamy, mixed, hyperthermic, Typic Haplustepts Fine-loamy, mixed, hyperthermic, Typic Haplustalfs	127	4.44
24	Fine, mixed, hyperthermic Typic Haplustalfs Fine-loamy, mixed, hyperthermic Typic Haplustepts	192	6.71
33	Fine, mixed, hyperthermic Typic Paleustalfs Fine, mixed, hyperthermic Typic Rhodustalfs	200	6.99
34	Fine loamy, mixed, hyperthermic Typic Paleustalfs Fine-loamy, mixed, hyperthermic Typic Rhodustalfs	74	2.59
35	Loamy-skeletal, mixed, hyperthermic Lithic Ustorthents Fine-loamy, mixed, hyperthermic Typic Haplustalfs	26	0.91
36	Fine, mixed, hyperthermic Typic Paleustalfs Fine loamy, mixed, hyperthermic Typic Rhodustalfs	110	3.84
40	Fine loamy, mixed, hyperthermic Typic Haplustepts Fine loamy, mixed, hyperthermic Typic Haplustalfs	137	4.79
41	Coarse loamy, mixed, hyperthermic Typic Ustorthents Fine loamy, mixed, hyperthermic Typic Paleustalfs	6	0.21
77	Fine loamy, mixed, hyperthermic Typic Rhodustalfs Loamy, mixed, hyperthermic Lithic Ustorthents	36	1.26
78	Fine, mixed, hyperthermic Typic Paleustalfs Fine loamy, mixed, hyperthermic Ultic Haplustalfs	147	5.14
79	Fine, mixed, hyperthermic Typic Haplustalfs Fine, mixed, hyperthermic Ultic Paleustalfs	525	18.35
80	Fine loamy, mixed, hyperthermic Typic Haplustalfs Loamy, mixed, hyperthermic Lithic Ustorthents	20	0.70

82	Fine loamy, mixed, hyperthermic Typic Haplustalfs Fine, mixed, hyperthermic Aeric Endoaqualfs	63	2.20
84	Fine, mixed, hyperthermic Aeric Endoaqualfs Fine loamy, mixed, hyperthermic Typic Plinthustalfs	103	3.60
85	Fine-loamy, mixed, hyperthermic Typic Haplustalfs Fine, mixed, hyperthermic Typic Paleustalfs	31	1.08
86	Fine, mixed, hyperthermic Typic Rhodustalfs Coarse loamy, mixed, hyperthermic Typic Ustorthents	77	2.69
87	Fine silty, mixed, hyperthermic Typic Haplustepts Fine loamy, mixed, hyperthermic Aeric Endoaquepts	378	13.21
Miscellaneous		112	3.91
Total		2861	100.00

Source:- Soil Acidity and fertility status of Jharkhand prepared by Dept. of SSAC, BAU & NBSSLLP Kolkata in 2006.

The base map of the district was prepared on 1:50,000 scale using Survey of India toposheets (73E/9,10,13,14,15 and 73I/1,2,3,6,7) and all the maps were demarcated with grid points at 2.5 km interval.

The soils are grouped under different soil reaction classes viz extremely acidic (pH<4.5), very strongly acidic (pH 4.5 – 5.0), strongly acidic (pH 5.1 – 5.5), moderately acidic (pH 5.6-6.0), slightly acidic (pH 6.1-6.5), neutral (pH 6.6-7.3), slightly alkaline (pH 7.4-7.8), moderately alkaline (pH 7.9-8.4), strongly alkaline (pH 8.5-9.0) according to Soil Survey Manual (IARI, 1970). The soils are rated as low (below 0.50 %), medium (0.50-0.75 %) and high (above 0.75 %) in case of organic carbon, low (<280 kg ha⁻¹), medium (280 to 560 kg ha⁻¹) and high (>560 kg ha⁻¹) in case of available nitrogen, low (< 10 kg ha⁻¹), medium (10 to 25 kg ha⁻¹) and high (> 25 kg ha⁻¹) for available phosphorus, low (< 108 kg ha⁻¹), medium (108 to 280 kg ha⁻¹) and high (> 280 kg ha⁻¹) for available potassium and low (<10 mg kg⁻¹), medium (10-20 mg kg⁻¹) and high (> 20 mg kg⁻¹) for available sulphur (Singh *et. al.* 2004, Mehta *et. al.*1988). Critical limits of Fe, Mn, Zn, Cu and B, which separate deficient from non-deficient soils followed in India are 4.5, 2.0, 0.5, 0.2 and 0.5 mg kg⁻¹ respectively. (Follet and Lindsay, 1970 and Berger and Truog, 1940).

The maps for the above mentioned parameters have been prepared using Geographic Information System (GIS) from data generated by analysis of grid soil samples.

SOIL ACIDITY AND FERTILITY STATUS

Soil Reaction

Soil pH is an important soil property, which affects the availability of several plant nutrients. It is a measure of acidity and alkalinity and reflects the status of base saturation. The soils of the district have been grouped under seven soil reaction classes according to Soil Survey Manual (IARI, 1970).

The soil pH ranges from 4.2 to 7.3. The soil reaction classes with area are given in table 2 and figure 2. The data reveals that strongly acid soils covers 39.6 percent area followed by very strongly acid (25.2 %), moderately acid (19.6 %) slightly acid (4.9 %) and extremely acid (4.7 %) soils. Soils of 2.1 percent area of the district are neutral in reaction.

Table 3.16 Soils under different reaction classes

Soil reaction	Area ('00ha)	% of the TGA
Extremely acidic (pH 4.0 to 4.5)	135	4.7
Very strongly acidic (pH 4.6 to 5.0)	720	25.2
Strongly acidic (pH 5.1 to 5.5)	1134	39.6
Moderately acidic (pH 5.6 to 6.0)	562	19.6
Slightly acidic (pH 6.1 to 6.5)	139	4.9
Neutral (pH 6.6 to 7.3)	59	2.1
Miscellaneous	112	3.9
Total	2861	100.0

Organic Carbon

The effect of soil organic matter on soil properties is well recognized. Soil organic matter plays a vital role in supplying plant nutrients, cation exchange

capacity, improving soil aggregation and hence water retention and soil biological activity.

In general the organic carbon content in the district ranges from 0.13 to 2.28 percent, however some soils of coal mine area shows high content of organic carbon. They are mapped into three classes i.e., low (below 0.5 %), medium (0.5-0.75 %) and high (above 0.75 %) (Table 3 and Figure 3). From table 3 it is seen that soils of majority of area (65.4 %) have high organic carbon content. Low and medium organic carbon content constitute 15.9 and 14.8 percent area respectively.

Table 3.17 Organic carbon status

Organic carbon (%)	Area ('00ha)	% of the TGA
Low (below 0.50 %)	454	15.9
Medium (0.50-0.75 %)	425	14.8
High (above 0.75 %)	1870	65.4
Miscellaneous	112	3.9
Total	2861	100.0

Macronutrients

Nutrients like nitrogen (N), phosphorus (P) and potassium (K) are considered as primary nutrients and sulphur (S) as secondary nutrient. These nutrients help in proper growth, development and yield differentiation of plants and are generally required by plants in large quantity.

Available Nitrogen

Nitrogen is an integral component of many compounds including chlorophyll and enzyme essential for plant growth. It is an essential constituent for amino acids which is building blocks for plant tissue, cell nuclei and protoplasm. It encourages above ground vegetative growth and deep green

colour to leaves. Deficiency of nitrogen decreases rate and extent of protein synthesis and result into stunted growth and develop chlorosis.

Available nitrogen content in the surface soils of the district ranges between 92 and 1536 kg/ha and details are given in table 4 and figure 4. Majority soils (57.6 %) of the district are medium (280-560 kg ha⁻¹) in available nitrogen content. Soils of 24.2 and 14.3 percent area have high (>560 kg ha⁻¹) and low (<280 kg ha⁻¹) available nitrogen content respectively.

Table 3.18 Available nitrogen status in the surface soils

Available nitrogen (kg ha⁻¹)	Area (‘00ha)	% of the TGA
Low (below 280)	408	14.3
Medium (280-560)	1647	57.6
High (above 560)	694	24.2
Miscellaneous	112	3.9
Total	2861	100.0

Available Phosphorus

Phosphorus is important component of adenosine di-phosphate (ADP) and adenosine tri-phosphate (ATP), which involves in energy transformation in plant. It is essential component of deoxyribonucleic acid (DNA), the seat of genetic inheritance in plant and animal. Phosphorous take part in important functions like photosynthesis, nitrogen fixation, crop maturation, root development, strengthening straw in cereal crops etc. The availability of phosphorous is restricted under acidic and alkaline soil reaction mainly due to P-fixation. In acidic condition it get fixed with aluminum and iron and in alkaline condition with calcium.

Available phosphorus content in these soils ranges between 0.3 and 18.6 kg/ha and their distribution is given in table 5 and figure 5. Data reveals that majority of the soils are low (66.0 % of TGA) in available phosphorous whereas soils of 30.1 % area have medium available phosphorous content.

Table 3.19 Available phosphorous status in the surface soils

Available phosphorous (kg ha⁻¹)	Area (‘00ha)	% of the TGA
Low (below 10)	1889	66.0
Medium (10-25)	860	30.1
Miscellaneous	112	3.9
Total	2861	100.0

Available Potassium

Potassium is an activator of various enzymes responsible for plant processes like energy metabolism, starch synthesis, nitrate reduction and sugar degradation. It is extremely mobile in plant and help to regulate opening and closing of stomata in the leaves and uptake of water by root cells. It is important in grain formation and tuber development and encourages crop resistance for certain fungal and bacterial diseases.

Available potassium content in these soils ranges between 54 and 476 kg/ha and details about area and distribution is given in table 6 and figure 6. The data reveals that majority of the soils (57.9 % of TGA) have medium available potassium content (108-280 kg ha⁻¹). Soils of 21.5 percent area are low (below 108) and 16.7 percent area are high (above 280 kg ha⁻¹) in available potassium content.

Table 3.20 Available potassium status in the surface soils

Available potassium (kg ha⁻¹)	Area (‘00ha)	% of the TGA
Low (below 108)	615	21.5
Medium (108-280)	1658	57.9
High (above 280)	476	16.7
Miscellaneous	112	3.9
Total	2861	100.0

Available Sulphur

Sulphur is essential in synthesis of sulphur containing amino acids (cystine, cysteine and methionine), chlorophyll and metabolites including co-enzyme A, biotin, thiamine, or vitamin B1 and glutathione. It activates many proteolytic enzymes, increase root growth and nodule formation and stimulate seed formation.

The available sulphur content in the soils ranges from 0.42 to 69.41 mg kg⁻¹ and details about area and distribution is given in table 7 and figure 7. Soils of 28.3 percent of the area are low (<10 mg kg⁻¹) whereas soils of 30.4 and 37.4 percent area are medium (10-20 mg kg⁻¹) and high (>20 mg kg⁻¹) in available sulphur content respectively.

Table 3.21 Available sulphur status in the surface soils

Available sulphur (mg kg⁻¹)	Area (‘00ha)	% of the TGA
Low (<10)	810	28.3
Medium (10-20)	870	30.4
High (>20)	1069	37.4
Miscellaneous	112	3.9
Total	2861	100.0

Micronutrients

Proper understanding of micronutrients availability in soils and extent of their deficiencies is the pre-requisite for efficient management of micronutrient fertilizer to sustain crop productivity. Therefore, it is essential to know the micronutrients status of soil before introducing any type of land use.

Available Iron

Iron is constituent of cytochromes, haems and nonhaem enzymes. It is capable of acting as electron carrier in many enzyme systems that bring about oxidation-reduction reactions in plants. It promotes starch formation and seed maturation.

The available iron content in the surface soils ranges between 9.0 and 98.8 mg kg⁻¹. As per the critical limit of available iron (> 4.5 mg kg⁻¹), all the soils are sufficient in available iron. They are grouped and mapped into four classes. Majority of the soils (56.9 % of TGA) have available iron content between the range of 50 to 100 mg kg⁻¹. The details of area and distribution is presented in table 8 and figure 8.

Table 3.22 Available iron status in the surface soils

Available iron (mg kg ⁻¹)	Area (‘00ha)	% of the TGA	Rating
<15	132	4.6	Sufficient
15-25	261	9.1	
25-50	728	25.5	
50-100	1628	56.9	
Miscellaneous	112	3.9	
Total	2861	100	

Available Manganese

Manganese is essential in photosynthesis and nitrogen transformations in plants. It activates decarboxylase, dehydrogenase, and oxidase enzymes.

The available manganese content in surface soils ranges between 8.8 and 69.0 mg kg⁻¹. As per the critical limit of available manganese (> 2 mg kg⁻¹), all the soils are sufficient in available manganese. They are grouped and mapped into four classes. Soils of 67.9 % area of district have available Mn content between 25 and 50 mg kg⁻¹. The details of area and distribution are presented in table 9 and figure 9.

Table 3.23 Available manganese status in the surface soils

Available manganese (mg kg ⁻¹)	Area ('00ha)	% of the TGA	Rating
<10	14	0.5	Sufficient
10-25	462	16.1	
25-50	1941	67.9	
50-100	332	11.6	
Miscellaneous	112	3.9	
Total	2861	100	

Available Zinc

Zinc plays role in protein synthesis, reproductive process of certain plants and in the formation starch and some growth hormones. It promotes seed maturation and production.

The available zinc in surface soils ranges between 0.22 and 19.20 mg kg⁻¹. They are grouped and mapped into six classes. Soils of majority area (95.1 % of TGA) are sufficient (>0.5 mg kg⁻¹) whereas soils of 1.0 percent area are deficient (<0.5 mg kg⁻¹) in available zinc. The details of area and distribution are presented in table 10 and figure 10.

Table 3.24 Available zinc status in the surface soils

Available zinc (mg kg ⁻¹)	Area (‘00ha)	% of the TGA	Rating
<0.5	29	1.0	Deficient
0.5-1.0	476	16.6	Sufficient
1.0-2.0	873	30.5	
2.0-3.0	469	16.4	
3.0-5.0	403	14.1	
5.0-20.0	499	17.5	
Miscellaneous	112	3.9	
Total	2861	100.0	

Available Copper

Copper involves in photosynthesis, respiration, protein and carbohydrate metabolism and in the use of iron. It stimulates lignifications of all the plant cell wall and is capable of acting as electron carrier in many enzyme systems that bring about oxidation-reduction reactions in plants.

The available copper status in surface soils ranges between 0.18 and 7.80 mg kg⁻¹. They are grouped and mapped into six classes. Majority of soils (94.8 % of TGA) have sufficient amount of available copper (>0.2 mg kg⁻¹) and soils of 1.3 % area are deficient in available copper (<0.2 mg kg⁻¹). The details of area and distribution are presented in table and figure.

Table 3.25 Available copper status in the surface soils

Available copper (mg kg ⁻¹)	Area (‘00ha)	% of the TGA	Rating
<0.2	36	1.3	Deficient
0.2-0.5	96	3.4	Sufficient
0.5-1.0	436	15.2	
1.0-2.0	641	22.4	
2.0-4.0	1013	35.4	
4.0-8.0	527	18.4	
Miscellaneous	112	3.9	
Total	2861	100.0	

Available Boron

Boron increases solubility and mobility of calcium in the plant and it act as regulator of K/Ca ratio in the plant. It is required for development of new meristematic tissue and also necessary for proper pollination, fruit and seed setting and translocation of sugar, starch and phosphorous etc. It has role in synthesis of amino acid and protein and regulates carbohydrate metabolism.

The available boron content in the soils ranges from 0.09 to 5.03 mgkg⁻¹ and details about area and distribution is given in table 12 and figure 12. The critical limit for deficiency of the available boron is <0.5. Soils of 22.5 percent area of district are deficient (<0.50 mgkg⁻¹) whereas 73.6 percent area are sufficient (>0.50 mgkg⁻¹) in available boron content.

Table 3.26 Available boron status in the surface soils

Available boron (mg kg ⁻¹)	Area (‘00ha)	% of the TGA	Rating
<0.25	336	11.8	Deficient
0.25-0.50	305	10.7	
0.50-0.75	399	13.9	Sufficient
>0.75	1709	59.7	
Miscellaneous	112	3.9	
Total	2861	100	

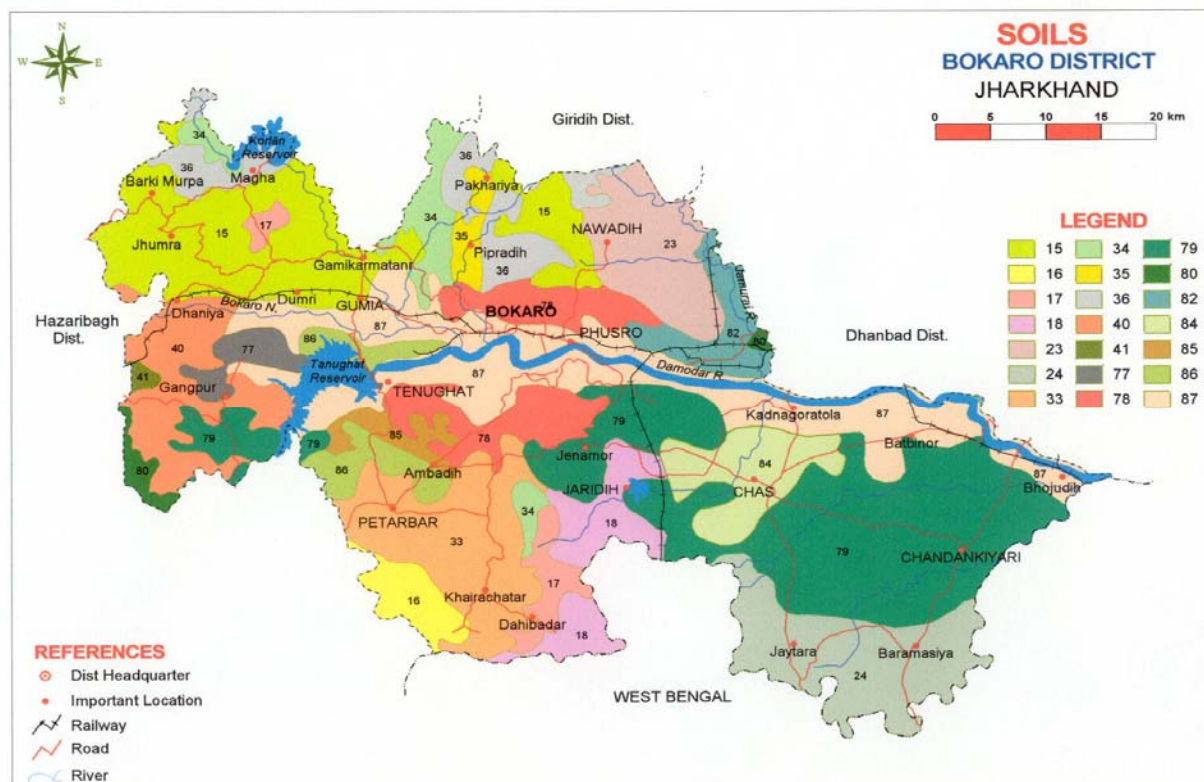


Fig. - 1

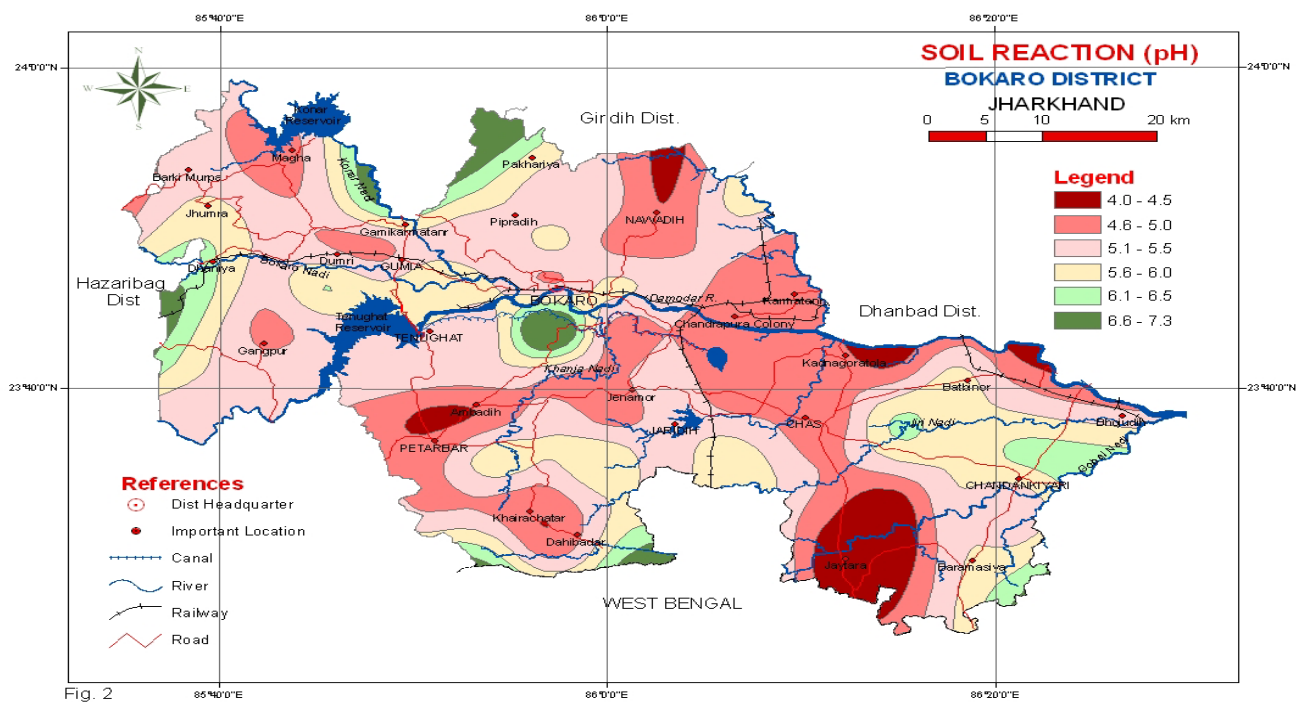
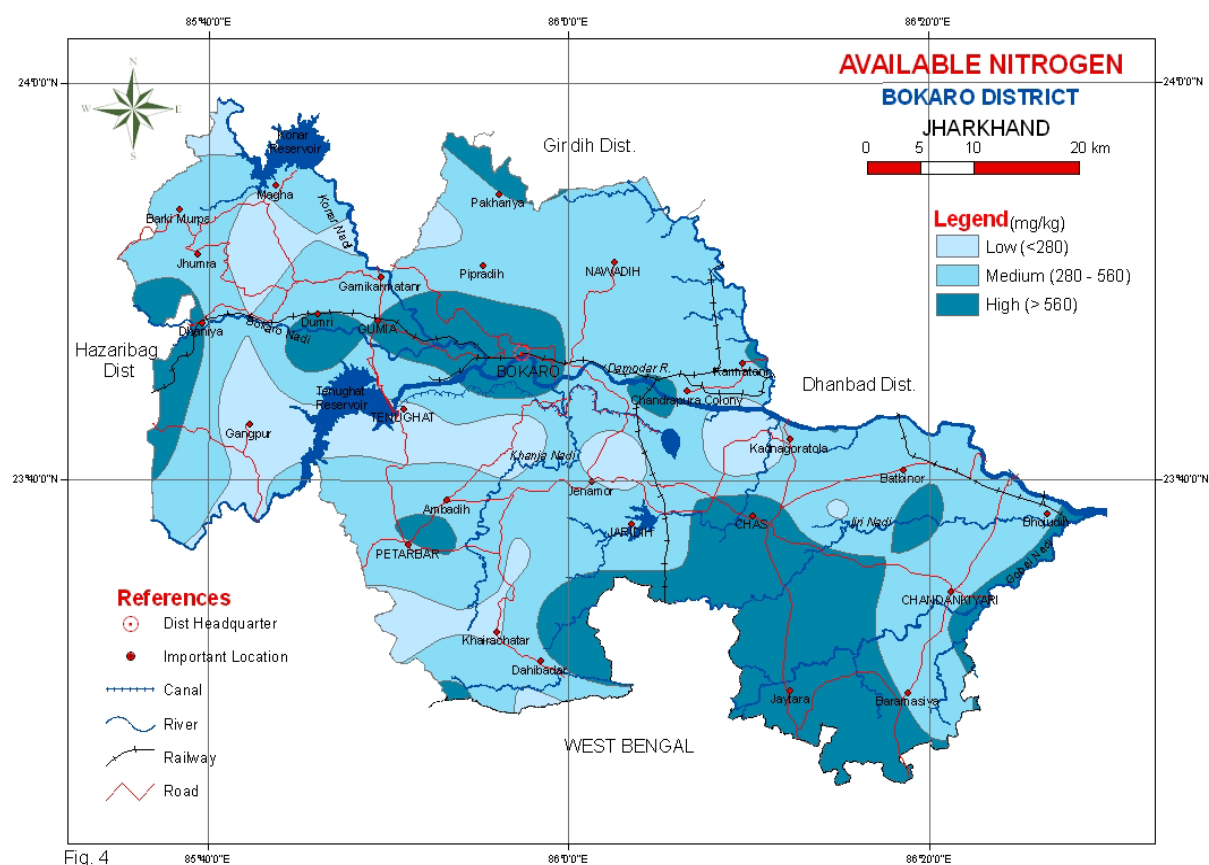
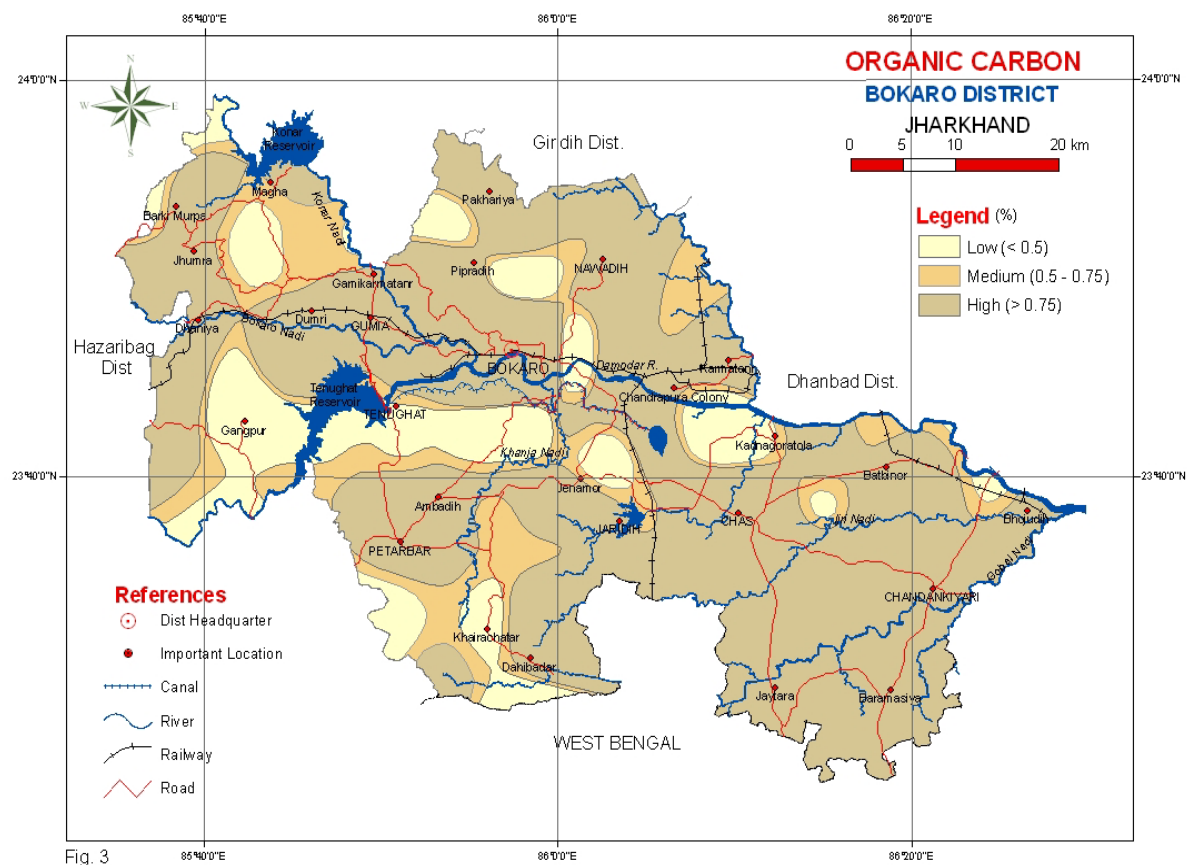
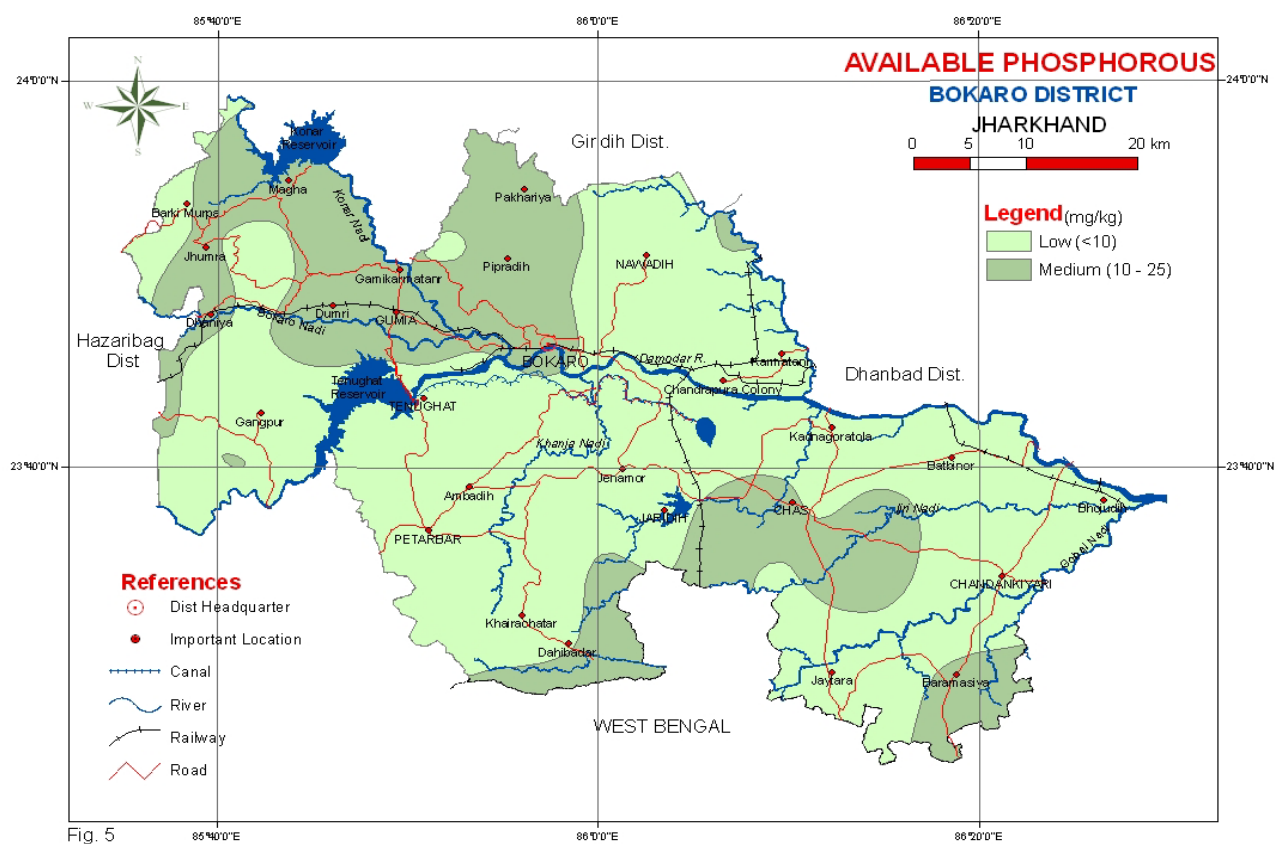
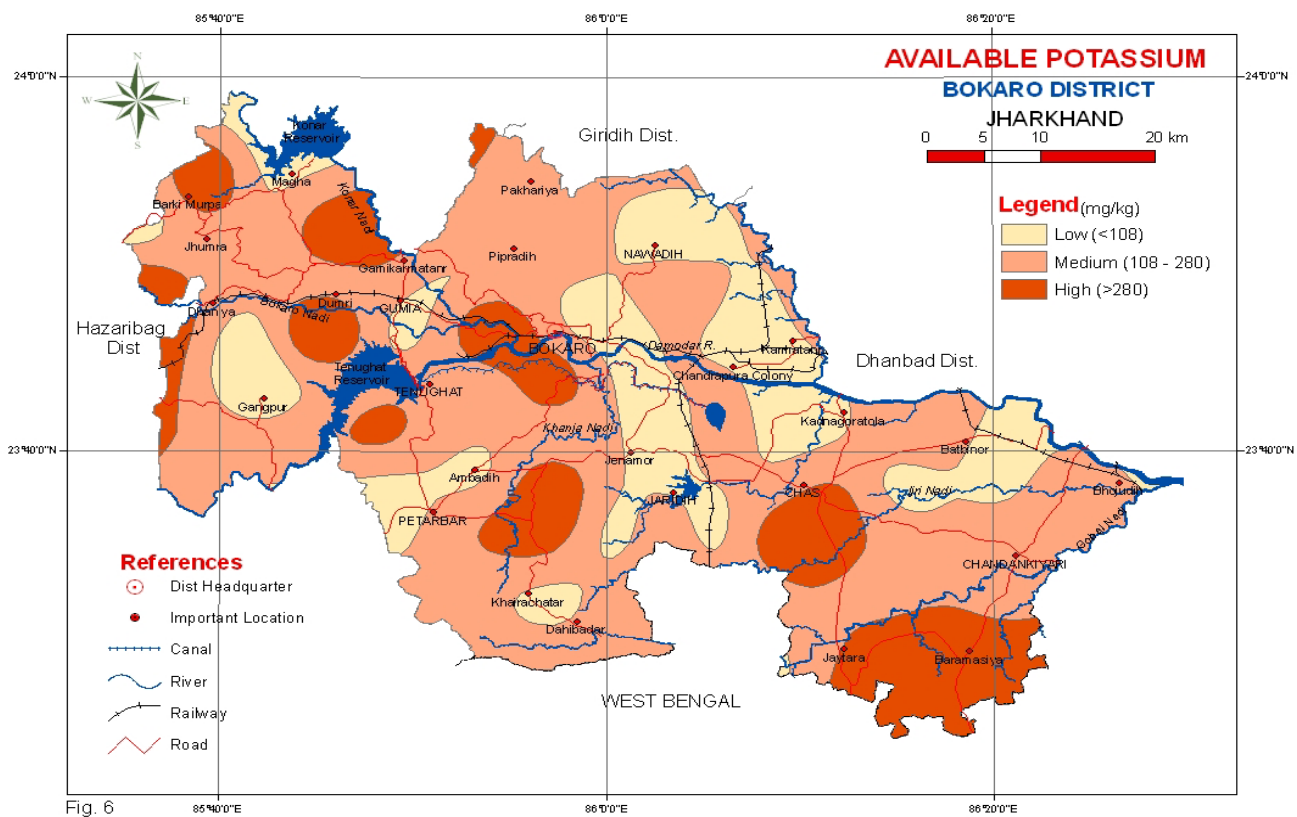


Fig. 2





The soil pH ranges from 4.2 to 7.3. Strongly acid soils covers 39.6 percent area followed by very strongly acid (25.2 %), moderately acid (19.6 %) slightly acid (4.9 %) and extremely acid (4.7 %) soils. Soils of 2.1 percent area of the district are neutral in reaction. The organic carbon content in the district ranges from 0.13 to 2.28 %. Soils of majority of area (65.4 %) have high organic carbon content. Low and medium organic carbon content constitute 15.9 and 14.8 percent area respectively. Available nitrogen content in the surface soils of the district ranges between 92 and 1536 kg/ha. Majority soils (57.6 %) of the district are medium (280-560 kg ha⁻¹) in available nitrogen content. Soils of 24.2 and 14.3 percent area have high (>560 kg ha⁻¹) and low (<280 kg ha⁻¹) available nitrogen content respectively. Available phosphorus content in these soils ranges between 0.3 and 18.6 kg/ha. Majority of the soils are low (66.0 % of TGA) in available phosphorous whereas soils of 30.1 % area are medium available phosphorous content. Available potassium content in these soils ranges between 54 and 476 kg/ha. Majority of the soils (57.9 % of TGA) have medium available potassium content (108-280 kg ha⁻¹). Soils of 21.5 percent area are low (below 108) and 16.7 percent area are high (above 280 kg ha⁻¹) in available potassium content. The available sulphur content in the soils ranges from 0.42 to 69.41 mg kg⁻¹ and soils of 28.3 percent of the area are low (<10 mg kg⁻¹) in available sulphur content respectively.

All the soils of district are sufficient in available iron and manganese whereas soils of 1.0 and 1.3 percent area are deficient in available zinc and copper respectively. Available boron content in the soils ranges between 0.09 to 5.03 mg kg⁻¹ and 22.5 percent area of district are deficient (<0.50 mg kg⁻¹).

3.9 Irrigation

Dugwell, ponds, tanks are the main sources of irrigation. The normal in the district is 1275 mm. All blocks fall under “Safe” category and dugwell is the MI structure. Construction of Check dams and LI projects on the streams/rivers (rivers (Viz. Gawai, Khajo, Kadma, Garga, etc) will provide irrigation to a large area. These rivers/streams are almost perennial in nature and most suitable for construction of Check-dams in the downstream.

Table No.-3.27 Irrigation Status of Bokaro District (Area in ha.)

Block	Dug well		Ahar/Pond		Check Dam		Deep Boring		Major Irrigation		Mini Irrigation Schemes		Total Irrigation	
	No.	Area Irrigated	No.	Area Irrigated	No.	Area Irrigated	No.	Area Irrigated	No.	Area Irrigated	No.	Area Irrigated	No.	Area Irrigated
Chas	445	322	42	550	18	180	-	-	01	910	5	15	511	1977
Chandankiyari	426	317	57	640	20	220	-	-	-	-	5	15	508	1192
Peterwar	411	421	38	515	19	272	-	-	01	855	9	315	478	2378
Kasmar	160	160	12	190	12	112	-	-	-	-	5	14	189	476
Jaridih	240	210	28	315	17	160	-	-	-	-	2	5	287	690
Nawadih	415	324	39	550	20	290	-	-	-	-	2	5	476	1169
Gomia	380	350	34	430	19	163	-	-	-	-	2	5	435	948
Bermo	65	52	12	70	04	45	-	-	-	-	4	8	85	175
Total :-	2542	2156	262	3260	129	1442	-	-	02	1765	34	382	2969	9005

3.10 Information on land based systems

In the district, Net cultivated Area is only 14.5% of the geographic area and the cropping intensity is 116%. Out of net sown area of 46653 heactares, only 6772 heactares are under irrigation. Paddy and Maize are two main crops of the district. Wheat, potato and vegetable are also grown in pocket where irrigation facility is available. Pulses, oilseeds and sweet potato are also cultivated in some areas in summer season.

Table No-3.28 AREA, RPODUCTION AND PRODUCTIVITY OF IMPORTANT KHARIF CROPS OF BOKARO DISTRICT.

(Area in hectare, Production in Ton, Productivity in Kilo gram per ha)

Sl. No	Name of Block	Year	Paddy			Maize			Arhar			Urd			Moong			Ground nut		
			A	P	PR	A	P	PR	A	P	PR	A	P	PR	A	P	PR	A	P	PR
1	Chas	2003-04	8973	13908	1550	734	1233	1680	38	2.85	75	16	0.912	57	8	0.76	96	9	0.68	76
		2008-09	4198	6548	1560	957	1598	1670	480	273	570	95	35	375	65	23	350	27	16	600
2	Chandankiyari	2003-04	7679	12439	1620	676	1449	1700	40	3.12	78	16	0.96	60	8	0.76	98	10	0.77	77
		2008-09	4217	6557	1555	930	1506	1620	400	224	560	80	28	350	60	18	300	17	09	550
3	Jaridih	2003-04	2035	2971	1460	612	991.4	1620	30	2.40	80	08	0.496	62	4	0.38	95	8	0.62	82
		2008-09	3466	5095	1470	846	1391	1645	390	193	495	75	26	350	64	22	350	18	10	550
4	Kasmar	2003-04	2149	3696	17.20	575	989	1720	40	3.20	80	18	1.08	60	10	0.99	99	9	0.72	75
		2008-09	3672	6095	1660	940	1569	1670	470	230	490	108	43	400	53	21	400	30	19	650
5	Peterbar	2003-04	8963	14699	1640	3406	5994.5	1670	50	4.10	82	20	1.16	58	12	1.22	102	14	1.14	80
		2008-09	4347	6868	1580	987	1668	1690	490	240	490	115	51	450	64	25	400	34	24	700
6	Gomia	2003-04	4005	6408	1600	730	1204.5	1650	25	2.00	80	10	0.60	60	4	0.40	100	10	0.80	78
		2008-09	3778	5629	1490	782	1274	1630	340	170	500	70	24	350	61	21	350	15	09	600
7	Bermo	2003-04	2307	3460	1500	1038	1640	1580	08	5.76	72	06	0.33	55	3	0.27	90	7	0.52	80
		2008-09	2623	3882	1480	455	696	1530	125	60	480	12	03	300	20	06	300	6	03	550
8	Nawadih	2003-04	4108	7558	1540	627	1028	1640	35	2.73	78	12	0.70	59	6	0.57	95	7	0.57	82
		2008-09	3975	6022	1515	968	1587	1640	482	226	470	72	25	350	65	23	350	19	11	600
9	Total	2003-04	40,219	65139	-	8398	14229.4	-	258	26.16	-	106	6.238	-	55	5.35	-	74	5.82	-
		2008-09	30276	46696	-	6865	11289	-	3177	1616	-	627	235	-	462	159	-	166	101	-

A- Area

P- Production

PR- Productivity

Table No-3.29 AREA, RPRODUCTION AND PRODUCTIVITY OF IMPORTANT RABBI CROPS OF BOKARO DISTRICT.
(Area in hectare, Production in Ton, Productivity in Kilo gram per ha)

S l. N o	Name of Block	Year	Wheat			Maize			Chick-pea			Pea			Lentil			Mustard/Rai		
			A	P	PR	A	P	PR	A	P	PR	A	P	PR	A	P	PR	A	P	PR
1	Chas	2003-04	260	520	2000	6	15.00	2500	42	63	1500	3	1.5	500	32	48.00	1500	75	37.5	500
		2008-09	304	319.2	1050	50	92.5	1850	440	405	920	90	108.9	1210	8	6.4	800	200	42	210
2	Chandankiyari	2003-04	240	480	2000	8	20.00	2500	38	57	1500	2	1.0	500	28	42.00	1500	70	35.0	500
		2008-09	217	217	1000	35	59.5	1700	335	295	880	70	80.5	1150	7	5.32	760	190	34.2	180
3	Jaridih	2003-04	165	312	18-90	3	7.50	2500	52	78	1500	2	1.0	500	22	33.00	1500	65	32.5	500
		2008-09	180	171	950	37	51	1500	330	287	875	70	88.2	1260	7	5.28	755	200	46	230
4	Kasmar	2003-04	280	546	1950	7	17.50	2500	38	57	1500	5	2.5	500	32	48.00	1500	70	35.0	500
		2008-09	252	239.4	950	31	60.4	1950	405	377	930	95	123.5	1300	8	6.64	830	220	66	300
5	Peterbar	2003-04	310	617	19-90	11	27.50	2500	56	84	1500	4	2.0	500	58	87.00	1500	85	44.0	500
		2008-09	310	341	1100	44	95.7	2175	415	398	960	95	124.4	1310	8	6.88	860	235	72.8	310
6	Gomia	2003-04	245	490	2000	5	12.50	2500	86	1.29	1500	5	2.5	500	62	93.00	1500	88	44.0	500
		2008-09	210	210	1000	31	49.6	1600	350	290	830	75	86.6	1155	5	3.90	780	195	44.8	230
7	Bermo	2003-04	122	220	1800	2	5.00	2500	12	18	1500	2	1.0	500	15	22.50	1500	35	17.5	500
		2008-09	145	141.4	975	17	25.5	1500	175	136	780	40	38.4	960	3	1.80	600	100	18	180
8	Nawadih	2003-04	270	540	2000	6	15.0	2500	65	97.5	1500	7	3.5	500	52	78	1500	78	39.0	500
		2008-09	265	291.5	1100	59	100.3	1700	410	357	780	85	90.1	1060	7	5.11	730	200	50	250
9	Total	2003-04	1892	3725	-	48	120	-	389	583.5	-	30	15.0	-	301	451.5	-	566	284.5	-
		2008-09	1883	1930.5	-	301	534.5	-	2860	2545	-	620	940.6	-	53	41.33	-	1540	373.8	-

A- Area

P- Production

PR- Productivity

Table No-3.30 AREA, RPODUTION AND PRODUCTIVITY OF IMPORTANT VEGETABLE CROPS OF BOKARO DISTRICT

District :- Bokaro

		Name of Vegetables																	
		Cauliflower			Cabbage			Tomato			Bringal			Chilli			L. finger		
		Area (ha)	prod (qt)	Productivity (q/ha)	Area (ha)	prod (qt)	Productivity (q/ha)	Area (ha)	prod (qt)	Productivity (q/ha)	Area (ha)	prod (qt)	Productivity (q/ha)	Area (ha)	prod (qt)	Productivity (q/ha)	Area (ha)	prod (qt)	Productivity (q/ha)
1	Bokaro (OP+HYB)	1303	356600	273.67	1097	323400	294.80	1011	283800	280.71	497	128600	258.75	60	5200	86.66	360	60000	166.66

		Name of Vegetables																	
		Bottle gourd			Bitter gourd			Cucumber			Ridge gourd			Sponge gourd			Frenchban		
		Area (ha)	prod (qt)	Productivity (q/ha)	Area (ha)	prod (qt)	Productivity (q/ha)	Area (ha)	prod (qt)	Productivity (q/ha)	Area (ha)	prod (qt)	Productivity (q/ha)	Area (ha)	prod (qt)	Productivity (q/ha)	Area (ha)	prod (qt)	Productivity (q/ha)
1	Bokaro (OP+HYB)	480	80000	166.66	605	99680	164.76	120	22800	190.00	284	46120	162.39	480	80000	166.66	147	13360	90.88

Table No-3.31 Block wise Livestock population of Bokaro district.

Sl No	Name of Block	Cattle	Buffalow	Sheep	Goat	Pig	Poultry	Ducery
1	Chas	194465	31201	6370	60844	97285	139325	4021
2	Jaridih	69465	19119	2370	37744	40200	38008	2022
3	Chandankiyari	60766	10118	6170	73844	102001	106000	4021
4	Bermo	69465	5766	5170	46344	59655	40125	2203
5	Kasmar	60468	6760	6370	40201	61249	58716	2015
6	Peterbar	71865	8080	7375	43744	175205	60716	2236
7	Gomia	69465	5660	8037	43844	150118	75024	2501
8	Nawadih	67891	4909	6370	41956	96285	60959	1015
	Total :-	663850	91613	48232	342177	781998	578873	20034

=Rural Health Facility in the District.

Sl NO.	Type of Heath Center	No.
1	Family planning Center-	02
2	TB Center	03
3	Primary Health Sub-Center	121
4	Health Center	200
5	Primary Health Center	08
6	Sub-divisional Hospital	03

Information on Market

Due to poor socio-economic condition the tribal farmers, marketed surplus often exceeds marketable surplus. Exploitation of village money, lenders and middle men are discernible in the district. Basically agricultural products, forest products, livestock, fish etc. are sold in the primary market. Unregulated weight and measures, lack of grading and standardization, lack of storage capacities & lack of farm organization are key features of existing market system in the district. Information on market infrastructure in the district are given below :

Table No-3.32 BAJAR/HATS IN BOKARO DISTRICT.

<i>Name of the Blocks</i>	<i>Name of Bajar/Hats</i>	<i>Shed Yes/No</i>	<i>Frequency</i>
<i>Chas</i>	<i>Pindrajora</i>	<i>N</i>	<i>2 days in a weak</i>
	<i>Talgaria more</i>	<i>N</i>	<i>4 days in a weak</i>
	<i>Mamarkudar</i>	<i>N</i>	<i>2 days in a weak</i>
	<i>Jodhadih more</i>	<i>YES</i>	<i>Daily</i>
	<i>ITI more</i>	<i>N</i>	<i>Daily</i>
	<i>Kura</i>	<i>N</i>	<i>2 days in a weak</i>
	<i>Bijulia more</i>	<i>N</i>	<i>2 days in a weak</i>
	<i>Gudguri</i>	<i>N</i>	<i>2 days in a weak</i>
	<i>Dundibad</i>	<i>N</i>	<i>3 days in a weak</i>
	<i>Sector- I</i>	<i>N</i>	<i>3 days in a weak</i>
	<i>Sector- IV</i>	<i>N</i>	<i>3 days in a weak</i>
	<i>Sector- V</i>	<i>N</i>	<i>3 days in a weak</i>
	<i>Sector- VII</i>	<i>N</i>	<i>3 days in a weak</i>
	<i>Sector- IX</i>	<i>N</i>	<i>3 days in a weak</i>
	<i>Siwandih</i>	<i>N</i>	<i>Daily</i>
	<i>Ritudih</i>	<i>N</i>	<i>Daily</i>
<i>Chandankiyari</i>	<i>Barmasia</i>	<i>Y</i>	<i>2 days in a weak</i>
	<i>Bhojudih</i>	<i>Y</i>	<i>2 days in a weak</i>
	<i>Sabra</i>	<i>N</i>	<i>2 days in a weak</i>
	<i>Chandra</i>	<i>N</i>	<i>2 days in a weak</i>
	<i>Simulia</i>	<i>N</i>	<i>2 days in a weak</i>
	<i>Duikanta</i>	<i>N</i>	<i>2 days in a weak</i>
	<i>Laglaha</i>	<i>N</i>	<i>2 days in a weak</i>
	<i>Cky middle school</i>	<i>N</i>	<i>3 days in a weak</i>
<i>Jaridih</i>	<i>Jainamore chowk</i>	<i>N</i>	<i>Daily</i>
	<i>Tupkadih</i>	<i>N</i>	<i>Daily</i>
	<i>Bahadurpur</i>	<i>N</i>	<i>1 days in a weak</i>
<i>Kasmar</i>	<i>Kasmar</i>	<i>N</i>	<i>Daily</i>
	<i>Khairchatar</i>	<i>N</i>	<i>Daily</i>
	<i>Dantu</i>	<i>N</i>	<i>Daily</i>
	<i>Pirgul</i>	<i>N</i>	<i>Daily</i>
<i>Petarbar</i>	<i>Peterwar</i>	<i>N</i>	<i>Daily</i>
	<i>Utasara</i>	<i>N</i>	<i>Daily</i>
	<i>Tenughat</i>	<i>N</i>	<i>Daily</i>
	<i>Chalkari</i>	<i>N</i>	<i>Daily</i>

<i>Gomia</i>	<i>Gomia</i>	<i>N</i>	<i>Daily</i>
	<i>Saram</i>	<i>N</i>	<i>Daily</i>
	<i>Lalpania</i>	<i>N</i>	<i>Daily</i>
	<i>Swang</i>	<i>N</i>	<i>Daily</i>
	<i>Mahuatanr</i>	<i>N</i>	<i>Daily</i>
	<i>Devipur</i>	<i>N</i>	<i>Daily</i>
	<i>Barkipunnu</i>	<i>N</i>	<i>Daily</i>
	<i>Kander</i>	<i>N</i>	<i>Daily</i>
	<i>Daniya</i>	<i>N</i>	<i>Daily</i>
<i>Bermo</i>	<i>Phusro bank more</i>	<i>N</i>	<i>Daily</i>
	<i>Kathara</i>	<i>N</i>	<i>Daily</i>
	<i>Kargali</i>	<i>N</i>	<i>Daily</i>
	<i>Chandrapura</i>	<i>N</i>	<i>Daily</i>
	<i>Jarangdih</i>	<i>N</i>	<i>Daily</i>
	<i>Jaridih Bajar</i>	<i>N</i>	<i>Daily</i>
	<i>Makoli</i>	<i>N</i>	<i>Daily</i>
	<i>Sunday Bajar</i>	<i>N</i>	<i>Daily</i>
	<i>Kurpaniys</i>	<i>N</i>	<i>Daily</i>
	<i>B.T.P.S</i>	<i>N</i>	<i>Daily</i>
<i>Nawadih</i>	<i>Telo</i>	<i>N</i>	<i>Daily</i>
	<i>Taranari</i>	<i>N</i>	<i>Daily</i>
	<i>Birnimanpur</i>	<i>N</i>	<i>Daily</i>
	<i>Nawadih</i>	<i>N</i>	<i>Daily</i>
	<i>Haladih</i>	<i>N</i>	<i>Daily</i>
	<i>Lahrbera</i>	<i>N</i>	<i>Daily</i>
	<i>Mungo</i>	<i>N</i>	<i>Daily</i>
	<i>Sahariya</i>	<i>N</i>	<i>Daily</i>

3.11: INFORMATION ON CREDIT

The Bokaro district has 551565 BPL persons as per the census 2001. At the end of March 2007, about 22000 poor families (04% of the total) could be covered under formal credit delivery system. Thus a large chunk (96%) of poor families is yet to be covered under informal credit systems. With a view to meet the challenge, NABARD in coordination with bank, NGOs and Govt. Officials has made significant efforts to promote Self Help Groups (SHGs) as a strategy for providing financial services to the poor and link them with formal credit institutions. As on date there are about 1700 SHGs ((appx.) of which 1350 SHGs (appx.) have opened bank accounts. Capacity building activities of NGOs members are promoting micro enterprises. At present there are a number of NGOs actively involved in promotion of SHGs.

Involvement of Banks and Govt. Departments.

In order to give further impetus to the SHG movement, the active involvement of Banks and Govt. Depts. required. State bank of India, Bank of India, Central Bank of India, Punjab National Bank, Jharkhand Gramin Bank and Union Bank of India are the main banks participate in the SHG programme. Further Extension Officers of DRDA and Anganwadi workers of ICDS projects are involved in SHG formation. The position on micro-finance in the district is as under:-

Micro finance Profile in the District

1.	Total no. of blocks in the District	:	08		
2.	No of blocks where SHGs exist	:	08		
3.	Total no. of blocks where SHGs are credit linked	:	07		
4.	No. of NGOs in the District	:	251		
5.	No. of NGOs participating in the linkage programme	:	07		
6.	No. of additional NGOs to be roped in during the year	:	01		
7.	Total no. of bank branches in the district	:	C.Bs. 100	RRB 08	Coops. 08
8.	Of which no. of branches participating in the linkage Programme	:	18	02	---
9.	No. of additional branches proposed to be roped in	:	06	01	---
10.	No. of Govt. agencies participating for	:	District Administration		
					BPL Groups for SGSY.
11.	No. of Govt./other agencies likely to participate	:	PRADAN and Anmol Dristi.		

Source:- Lead District Manager, Bokaro.

Means for Expansion of Linkage Programme:-

Seven NGOs have been sanctioned financial assistance from NABARD for promotion and linkage of 500 SHGs. The status of the SHG-Bank Linkage Programme sanctioned to various NGOs under promotional programme of NABARD is as under :-

Table No-3.33

Sl No.	Name of the SHPI	Groups promoted		Groups Credit Linked	
		Total	Of which women groups	Total	Of which women groups
1	Jan Jagaran Kendra	50	50	17	17
2	Simanchal Janakalyan Samiti	50	50	38	38
3	Shree Amar Sanskar	50	50	10	10
4	Mahila Janshakti Sangathan	39	39	02	02
5	Jan Chetna Manch, Bokaro	100	100	46	46
6	SAHIA	41	41	0	0
7	AINA	50	50	16	16
	Total	380	380	129	129

PRADAN, and Anmol Dristi are likely to be associated with NABARD during 2008-09.

As on 31 March 2008, 1397 SHGs have been formed and 692 groups have been linked with financial assistance of Rs. 77.587 lakh under SHG Bank linkage programme.

On the part of State Govt. the field staffs of DRDA and ICDS are actively involved in formation of SHGs. It has decided by District Admn. That more number of SHGs will be covered under SGSY during 2008-09.

NGOs/VAS in Bokaro:

Though there are number of NGOs functioning in Bokaro district, 07 NGOs have been roped in for SHG formation and linkage with grant assistance support from NABARD. PRADAN and Anmol Dristi may apply to NABARD for promotion of 100 groups. Lack of dedicated NGOs in the district is hampering the expansion of linkage programme in a big way. However efforts are made with small but dedicated NGOs for promotion and linkage of SHGs during 2009-10.

Status of Farmers Club Programme as on 31 March 2008 :

Bank Clubs	NGO/VA clubs	Satellite Clubs	Total clubs
17	--	--	17

Farmers Clubs promoted by banks with the conceptual and financial Support from NABARD have been instrumental in spreading awareness among the villagers regarding various programmes meant for their benefit, principles of development through credit, helping the banks in recovery and acting as a forum for interaction between the farmers and agriculture experts of KVKs. This has been well received by the villagers and there is an increasing demand for more clubs.

Women Development

A. Gender issue : Gender refers to the social differences between men and women that are learned, changeable over time and have wide variations within and among their cultures. The Women population is about 838773 which variations within and among their cultures. The district. The male-female ratio is 1000:894. female workers constitute only 12% of the female population. Under SHG Bank linkage programme, women are being imparted training for skill up gradation and learning micro enterprises business at a low level. There is a need of areas like home made products such as Spice making, agarbati, candle, soap making, etc. ponds to women Self Help Groups (SHG). Apart from this, most of the SHGs are exclusively of female members.

Credit package for women

There is no exclusive credit package for women beneficiaries in the district. However, wherever possible women beneficiaries are being accorded priority in programmes such as SHGs, Rural Entrepreneurship Development Programme (REDP) and Skill Development Initiatives (SDI).

Past Trends

It is observed that women SHGs have outnumbered male SHGs and 98% members were females.

Table No-3.34 AN OVERVIEW OF BANK BRANCHES IN BOKARO DISTRICT

Sl. No	Bank	U	SU	R	TOTAL
1	BOI	4	8	13	25
2	SBI	11	11	10	32
3	UNITED	2	2	1	5
4	CBI	-	1	2	3
5	ALLAH	2	1	2	5
6	PNB	2	1	2	5
7	UNION	3	-	2	5
8	NCO	1	2	-	3
9	CANARA	3	-	-	3
10	BOB	3	-	-	3
11	DENA	1	-	-	1
12	IOB	2	-	-	2
13	SYND.	2	-	-	2
14	VIJAYA	1	-	-	1
15	INDIAN	1	-	-	1
16	ANDHRA	1	-	-	1
17	JGB	-	1	7	8
18	DCCB	1	1	1	3
19	HCCB	1	-	-	1
20	LDB	-	2	-	2
21	GCCB	-	1	1	2
22	HDFC	2	-	-	2
23	UTI	1	-	-	1
24	ICICI	1	1	-	2
25	INDUSIND	1	-	-	1
26	IDBI	1	-	-	1
27	CORP. BANK	-	1	-	-
28	ORIENTEL BANK	-	1	-	-
	Total	47	34	41	122

**Table No-3.35 BANK WISE C:D RATIO FOR THE LAST THREE YEARS
AS ON 31.03.2009**

(Rs. In Lacs)

Sl No	BANK NAME	2006-07			2007-08			2008-09		
		TOTAL DEP.	TOTAL ACV.	RATIO %	TOTAL DEP.	TOTAL ACV.	RATIO %	TOTAL DEP.	TOTAL ACV.	RATIO %
1	ALLAH	107.75	62.66	58.25	11776	6241	53.00	151.41	62.34	41.17
2	ANDHRA	11.28	3.18	28.19	1685	498	29.55	23.10	5.77	24.98
3	BOB	138.75	34.46	24.84	11120	4709	42.35	168.46	39.87	23.67
4	BOI	488.04	109.21	22.38	67258	13271	19.73	864.81	157.03	18.16
5	CANARA	89.28	126.60	141.80	10062	19296	191.77	173.49	185.30	106.81
6	CBI	46.27	12.84	27.75	5576	1393	24.98	NA	NA	NA
7	DENA	20.61	3.51	17.03	2686	371	13.81	41.75	5.54	13.27
8	JGB	45.96	13.52	29.42	6000	1100	18.33	65.18	11.28	17.31
9	IOB	24.41	9.70	39.74	2856	1177	41.21	37.08	13.12	35.38
10	SYND	61.58	22.45	36.46	7806	2238	28.67	116.72	28.40	24.33
11	SBI	11181.24	657.56	55.67	158604	76491	48.23	2092.48	1020.29	48.76
12	UCO	105.95	15.11	14.26	15204	1393	9.16	169.19	14.84	8.77
13	UNION	105.60	53.49	50.65	16959	6461	38.10	196.19	66.86	34.08
14	UNITED	125.58	32.46	25.85	13762	3500	25.43	182.76	49.15	26.89
15	VIJYA	12.06	3.92	32.50	1486	534	35.94	18.46	4.93	26.71
16	PNB	162.53	59.78	36.78	18308	7416	40.51	208.78	73.66	35.28
17	INDIAN	22.62	4.07	17.99	2689	541	20.12	33.74	6.92	20.51
18	ICICI	58.04	5.99	10.32	8290	4715	56.88	86.35	25.73	29.80
19	AXIS BK.	45.53	0.98	2.15	5064	532	10.51	81.77	3.41	4.17
20	HDFC	63.23	22.96	36.31	6623	1317	19.89	86.40	22.68	26.25
21	IDBI	-	-	-	962	00	0.0	18.95	0.55	2.90
22	INDUS	15.00	2.00	13.33	1700	407	23.94	31.00	6.00	19.35
23	OBOC	-	-	-	-	-	-	2.03	0.07	3.45
	G.TOTAL	2931.31	1256.45	42.86	376476	153601	40.80	4850.10	1803.74	37.19

Table No-3.36 DISTRICT CREDIT PLAN
BOKARO DISTRICT
BANK WISE ACP 2009-10

Revised as per SLBC/AC/2/200 dt. 20.05.2009

(Amt. in Rs. Lacs)

Sl No	Bank Name	Agriculture	MSME	OPS	Total PS	NPS	TPS+NPS
1	Allahabad	719.80	1047.93	920.35	2688.08	2079.86	4767.94
2	Andhra	123.07	179.25	152.82	455.14	362.61	817.75
3	BOB	403.43	586.92	513.54	1503.89	1690.04	3193.93
4	BOI	2899.96	4194.40	3623.29	10717.65	6785.26	17502.91
5	CANARA	584.78	581.25	745.86	2181.89	2085.94	4267.83
6	CBI	269.35	392.15	341.06	1002.56	1353.13	817.80
7	DENA	123.12	179.38	152.82	455.19	362.61	817.80
8	HDFC	246.24	358.38	311.20	915.82	362.61	1278.43
9	IOB	275.55	401.04	348.25	1024.84	829.67	1854.51
10	INDIAN	123.12	179.25	152.82	455.19	362.61	817.80
11	PNB	764.11	1113.14	977.16	2854.41	2050.25	4904.66
12	SYN	310.93	452.71	394.58	1158.22	1053.81	2212.03
13	Union Bank	615.49	895.90	786.29	2297.68	1772.33	4070.01
14	UBI	643.19	936.39	821.88	2401.46	1241.41	3642.87
15	UCO Bank	332.54	479.40	348.57	1160.51	1787.68	2948.19
16	VIJAYA	123.12	179.25	152.87	455.24	362.61	817.85
17	SBI	5684.57	8140.87	7055.61	20881.05	16669.88	37550.93
18	JGB	330.65	118.30	95.99	544.94	282.05	748.73
19	Axis Bank	89.65	241.93	206.33	537.91	543.36	1081.27
20	IndusInd	0.00	179.25	152.87	332.12	416.61	748.73
21	ICICI	246.24	358.38	311.20	915.82	741.42	1657.24
22	IDBI	0.00	294.25	250.96	545.21	683.91	1229.12
23	Corporation Bank	50.65	70.93	61.34	182.92	142.56	325.48
24	OBC	50.65	70.93	61.34	182.92	142.56	325.48
	TOTAL:-	15010.21	21901.45	18939.00	55850.66	44164.78	100015.44

Source: Lead District Manager

Table No-3.37 BANK WISE ACHIVEMENT UNDER KCC
2005-06 & 2006-07 AS ON MARCH 2007

Sl No	Name of the Bank	2005-06			2006-07		
		Target	Achie	Achie %	Target	Achie	Achie %
1	Allahabad Bank	200	115	58	200	227	114
2	Bank of India	1000	1895	190	1600	1939	121
3	Central Bank of India	200	102	51	300	172	57
4	Punjab Bank of India	200	132	66	200	48	24
5	United Bank of India	200	52	26	200	132	66
6	JGB	200	32	16	1200	830	69
7	State Bank of India	800	520	65	1700	720	42
	Total :-	3950	3043	77	7400	5473	74

Table No-3.38 BANK WISE ACHIVEMENT UNDER KCC
2007-08 AS ON 31.03.2008

Sl No	Name of the Bank	2007-08		
		Target	Achie	Achie %
1	ALLAHABAD BANK	200	72	36.00
2	ANDHRA BANK	-	-	-
3	BANK OF BARODA	1600	1370	85.63
4	CANARA BANK	-	-	-
5	CNTRAL BANK OF INDIA	300	114	38
6	DENA BANK	-	-	-
7	JHARKHAND GRA. BK	1700	827	48.65
8	INDIAN OVER. BANK	-	-	-
9	SYNDICATE BANK	-	-	-
10	STATE BANK OF INDIA	2000	404	20.20
11	UCO BANK	-	-	-
12	UNION BANK OF INDIA	200	18	9.00
13	UNITED BANK OF INDIA	1200	43	3.58
14	VIJAYA BANK	-	-	-
15	ICICI BANK	-	-	-
16	PUNJAB NATIONAL BK.	200	67	33.50
17	INDIAN BANK	-	-	-
18	AXIS BANK	-	-	-
19	HDFC BANK	-	-	-
20	IDBI BANK	-	-	-
21	UNDUSIND BANK	-	-	-
	TOTAL :-	7400	2915	33.39

Table No-3.39 DISTRICT BOKARO
ACHIEVEMENT UNDER ACP 2009-10

As at 31.03.2009

(Amt. in Rs. Lacs)

Sl	Banks	Agriculture			SSI			OPS			Total PS			NPS			TPS+NPS		
		Target	Achiv.	%	Target	Achiv.	%	Target	Achiv.	%	Target	Achiv.	%	Target	Achiv.	%	Target	Achiv.	%
1	Allahabad	508.75	602.26	118.38	808.85	12.35	1.53	669.65	151.22	22.58	1987.25	765.83	38.54	1543.20	47.25	3.06	3530.45	813.08	23.03
2	Andhra	89.25	0.50	0.56	141.90	0.00	0.00	117.40	25.00	21.29	348.55	25.50	7.32	286.00	25.00	8.74	634.55	50.50	7.96
3	BOB	292.45	37.55	12.84	464.95	145.52	31.30	384.95	1034.78	268.81	1142.35	1217.85	106.61	1288.20	2809.39	218.09	2430.55	4027.24	165.69
4	BOI	2065.50	2163.00	104.72	3265.60	3096.00	94.81	2691.80	3015.00	112.01	8022.90	8274.00	103.13	5081.60	4873.00	95.89	13104.50	13147.00	100.32
5	CANARA	360.80	167.00	46.29	573.60	1788.00	311.72	474.95	1015.00	213.71	1409.35	2970.00	210.74	1352.65	14545.00	1075.30	2762.00	17515.00	634.14
6	CBI	195.25	-	0.0	310.45	0.00	0.00	257.00	0.00	0.00	762.70	0.00	0.00	1033.85	0.00	0.00	1796.55	0.00	0.00
7	DENA	89.25	12.05	13.50	141.90	46.20	32.56	117.00	189.23	161.18	348.55	247.48	71.00	286.00	110.89	38.77	634.55	358.37	56.48
8	HDFC	178.50	0.00	0.00	283.75	0.00	0.00	234.85	118.00	50.24	697.10	118.00	16.93	286.00	1139.00	398.25	983.10	1257.00	127.86
9	IOB	178.50	0.00	0.00	283.75	223.49	78.76	234.85	174.00	74.09	697.10	397.49	57.02	572.00	246.00	43.01	1269.10	643.49	50.48
10	INDIAN	89.25	0.00	0.00	141.90	82.00	57.79	117.40	62.00	52.81	348.55	144.00	41.31	286.00	150.00	52.45	634.55	249.00	46.33
11	PNB	524.80	412.00	78.51	834.90	1231.00	147.44	690.75	1011.00	146.36	2050.45	2654.00	129.44	1478.75	512.00	34.62	3529.20	3166.00	89.71
12	SYN	225.40	13.00	5.77	358.40	181.00	50.50	296.70	191.00	64.37	880.50	385.00	43.73	807.85	239.00	29.58	1688.35	624.00	36.96
13	Union Bank	446.15	99.25	22.25	709.30	161.86	22.82	587.30	67.19	11.44	1742.75	328.30	18.84	1350.35	2.23	0.17	3093.10	330.53	10.69
14	UBI	466.25	363.00	77.86	741.30	381.00	51.40	613.70	383.00	62.41	1821.25	1127.00	61.88	949.50	330.00	34.76	2770.75	1457.00	52.59
15	UCO Bank	178.50	6.30	3.53	283.75	13.54	4.77	234.85	413.26	175.97	697.10	433.10	62.13	1275.45	116.00	9.09	1972.55	549.10	27.84
16	VIJAYA	89.25	0.00	0.00	141.90	0.00	0.00	117.40	452.00	385.01	348.55	452.00	129.68	286.00	41.00	14.34	634.55	493.00	77.69
17	SBI	3399.20	146.00	4.30	5321.2	2034.00	38.22	4414.65	4236.00	95.95	13135.05	6416.00	48.85	10536.00	8767.00	83.21	23671.05	15183.00	64.14
18	JGB	726.15	99.77	13.74	283.75	4.95	1.74	222.15	79.24	35.67	1232.05	183.96	14.93	79.20	199.09	25.16	2023.25	383.05	18.93
19	Axis Bank	89.25	0.00	0.00	141.90	155.00	109.23	117.40	83.00	70.70	348.55	238.00	68.28	286.00	208.00	72.73	634.55	446.00	70.29
20	IndusInd	89.25	0.00	0.00	141.90	0.00	0.00	117.40	0.00	0.00	348.55	0.00	0.00	286.00	600.00	209.79	634.55	600.00	94.56
21	ICICI	178.25	0.00	0.00	283.75	-	0.00	234.85	5.00	2.13	697.10	5.00	0.72	572.00	366.00	63.99	1269.10	371.00	29.23
22	IDBI	89.25	0.00	0.00	141.90	0.00	0.00	117.40	30.00	25.55	348.55	30.00	-	286.00	25.00	8.74	634.55	55.00	8.67
23	Corporation Bank	-	-	-	-	-	-	-	-	-	-	-	-	-	-	-	-	-	-
24	OBC	-	-	-	-	-	-	-	-	-	-	-	-	-	-	-	-	-	-
	TOTAL:-	10549.45	4121.68	39.07	15800.60	9555.91	60.48	13064.80	12734.92	97.48	39414.85	26412.51	67.01	30920.60	35350.85	114.33	70335.45	61763.36	87.81

Source: Lead District Manager

Table No-3.40 DISTRICT BOKARO
ACHIEVEMENT UNDER Govt. Sponsored Scheme 2008-09
As at 31.03.2009

(Amt. in Rs. Lacs)

Sl No	Bank Name	KCC Physical			SGSY Loan			SGSY Subsidy		
		Target	Achiv.	%	Target	Achiv.	%	Target	Achiv.	%
1	Allahabad	200	163	81.50	31.33	35.07	111.94	17.70	24.56	138.76
2	Andhra	-	-	-	8.23	1.20	14.58	4.65	0.80	17.20
3	BOB	-	-	-	1.77	0.90	50.85	1.00	0.60	60.00
4	BOI	1600	1712	107.00	164.84	132.20	80.20	93.13	99.72	107.08
5	CANARA	-	-	-	8.85	3.27	36.95	5.00	2.39	47.80
6	CBI	300	24	8.00	36.55	11.04	30.21	20.65	7.02	34.00
7	DENA	-	-	-	-	-	-	-	-	-
8	JGB	1700	303	17.82	78.23	31.09	39.74	44.20	16.57	37.49
9	IOB	-	-	-	5.31	1.83	34.46	3.00	0.93	31.00
10	SYN	-	-	-	3.54	1.75	49.44	2.00	1.00	50.00
11	SBI	2000	324	16.20	199.21	138.96	69.76	112.55	99.79	88.66
12	UCO	-	-	-	-	-	-	-	-	-
13	Union Bank	200	08	4.00	26.11	20.01	76.64	14.75	17.30	117.29
14	UBI	1200	138	11.50	28.32	26.05	91.98	16.00	14.81	92.56
15	VIJAYA	-	-	-	3.54	1.10	31.07	2.00	0.65	32.50
16	ICICI	-	-	-	-	-	-	-	-	-
17	PNB	200	262	131.00	36.82	12.79	34.74	20.80	9.99	48.03
18	INDIAN	-	-	-	-	-	-	-	-	-
19	AXIX	-	-	-	-	-	-	-	-	-
20	HDFC	-	-	-	-	-	-	-	-	-
21	IDBI	-	-	-	-	-	-	-	-	-
22	INDUSIND	-	-	-	-	-	-	-	-	-
23	Corporation Bank	-	-	-	-	-	-	-	-	-
24	OBC	-	-	-	-	-	-	-	-	-
	TOTAL:-	7400	2934	39.65	632.65	417.26	65.95	357.43	296.13	82.85

Source: Lead District Manager

Table No-3.41 DISTRICT BOKARO
ACHIEVEMENT UNDER Govt. Sponsored Scheme 2008-09
As at 31.03.2009

Sl No	Bank Name	PMEGP Physical (19.3.09)			PMEGP Margin/Subsidy (Rs.)			No Frill A/C		
		Target	Achiv.	%	Target	Achiv.	%	Target	Achiv.	%
1	Allahabad	7	9	128.57	8.40	15.83	188.45	1603	-	-
2	Andhra	1	1	-	1.20	1.58	-	0	-	-
3	BOB	4	-	-	4.80	-	-	175	-	-
4	BOI	28	10	35.71	33.60	41.42	123.27	10636	-	-
5	CANARA	5	1	-	6.00	0.30	-	705	-	-
6	CBI	5	1	-	6.00	1.22	-	0	-	-
7	DENA	1	-	-	1.20	-	-	35	-	-
8	JGB	12	-	-	14.40	-	-	4654	-	-
9	IOB	2	-	-	2.40	-	-	0	-	-
10	SYN	3	-	-	3.60	-	-	1710	-	-
11	SBI	36	10	27.78	43.20	19.40	44.91	2983	-	-
12	UCO	2	-	-	2.40	-	-	113	-	-
13	Union Bank	4	2	-	4.80	2.80	-	922	-	-
14	UBI	5	-	-	6.00	-	-	350	-	-
15	VIJAYA	1	-	-	1.20	-	-	0	-	-
16	ICICI	2	-	-	2.40	-	-	0	-	-
17	PNB	6	-	-	7.20	-	-	4627	-	-
18	INDIAN	1	1	100.00	1.20	8.75	729.17	0	-	-
19	AXIX	1	-	-	1.20	-	-	0	-	-
20	HDFC	3	-	-	2.40	-	-	0	-	-
21	IDBI	1	-	-	7.20	-	-	1240	-	-
22	INDUSIND	1	1	100.00	1.20	1.15	95.83	0	-	-
23	Corporation Bank	-	-	-	-	-	-	0	-	-
24	OBC	-	-	-	-	-	-	6	-	-
	TOTAL:-	131	36	27.48	157.20	92.45	58.81	29759	-	-

Table No-3.42 BANK WISE ACHIVEMENT UNDER PMRY 2006-07, 2007-08
As on 31.03.2009

(Amt. in Rs. Lacs)

Sl. No	Name of the Bank	Year 2006-07					Year 2007-08				
		Target	Sanction		Disbursed		TARGET PHY	SANCTIO		DISBURSED	
			No.	% age.	No.	% age.		A/C	AMT.	A/C	AMT.
1	Bank of India	85	81	95	62	73	62	56	59	52	39.42
2	State Bank of India	330	223	68	189	57	250	191	226.82	159	127.00
3	Allahabad Bank	49	30	61	27	55	42	17	22.00	13	21.00
4	United Bank of India	62	42	68	30	48	38	29	37.00	26	24.00
5	Punjab National Bank	51	32	63	24	47	40	34	43.00	32	27.85
6	Central Bank of India	26	19	73	08	31	16	10	1.00	10	7.80
7	Union Bank	29	17	59	11	38	26	21	24.00	20	18.75
8	UCO Bank	20	10	50	07	35	14	09	09.00	07	05.00
9	Canara Bank	21	16	76	07	33	19	19	24.00	19	15.00
10	Bank of Baroda	21	08	38	03	14	16	06	08.00	06	4.75
11	Dena Bank	21	12	57	03	14	15	07	07.00	06	05.00
12	Syndicate Bank	21	16	76	08	38	18	16	17.00	12	10.25
13	Vijaya Bank	21	08	38	05	24	15	06	06.00	06	03.00
14	Indian Overseas Bank	21	11	52	11	52	15	05	05.00	05	03.05
15	Indian Bank	21	06	29	04	19	15	06	08.50	06	04.00
16	Andhra Bank	21	10	48	09	43	15	08	10.00	08	06.00
17	UTI	05	07	140	03	60	05	03	03.00	03	02.00
18	HDFC	05	-	-	-	-	10	04	07.00	-	01.00
19	ICICI	05	05	100	05	100	10	05	02.50	02	-
20	Indusind Bank	05	-	-	-	-	05	-	-	-	-
21	IDBI Bank	-	-	-	-	-	04	-	-	-	-
	TOTAL:-	834	553	66	416	50	650	452	529.82	392	320.87

Table No-3.43 SCALES OF Finance for different crops in Bokaro district

Proposed Scales of Finance per acre for 2009-10

(Amount in Rs.)

Sl no	Name of the Crop	Land preparation	Seed	Fertiliser and Pesticide	Irrigation	Labour cost for cultivation & harvesting	Misc -cost and consumption need	Total Cost of Cultivation
1	Paddy (HYV) Maxm	2000	500	1600		6000	1900	12000
	Paddy (HYV) Minm	2,000	500	1400		5500	1600	11000
2	Paddy (Hyb) Maxm	2000	2250	2000		6000	2000	14250
	. Paddy (Hyb) Minm	2000	1500	1600		6000	2000	13100
3	Maize Maxm	1500	600	1600		5000	1800	10500
	Maize Min	1500	600	1500		5000	1400	10000
4	Wheat Maxm	2000	1000	1600	3000	4000	1500	13100
	Wheat Minm	2000	1000	1400	2500	4000	1500	12400
5	Potato Maxm	3000	18000	6000	3000	5000	2000	37000
	Potato Minm	3000	18000	5000	2500	5000	1500	35000
6	Pulses Maxm	1500	2000	1000	1000	3000	1500	10000
	Pulses Minm	1500	1000	1000		2500	1500	7500
9	Oil seeds Maxm	1500	900	1500	1500	2500	1500	9400
	Oil seeds Minm	1500	900	1000	800	2500	1000	7700
10	Vegetables Maxm	3000	2000	8000	3000	4000	2000	22000
	Vegetables Minm	3000	1800	7500	2500	4000	2000	20800

The Scales of Finance mentioned above area approved in a meeting held on 13/06/2009 of District Level Technical Committee (DLTC)

(Rabindra Nath)
Team leader
PRADAN, Boakro

(Uday Kr. Singh)
In-charge, KVK
Petarbar

(S. L. Khemka)
Jhar. Gramin Bank
Chas

(U. Tiwari)
LDM, Bokaro

(D. S. Minz)
DDM, NABARD

(A. K. Gupta)
DAO, Bokaro

(M. L. Sharma)
DDC, Bokaro

National Rural Employment Guarantee Act (NREGA)

Friday, June 19, 2009

Back

Table No-3.44 Employment Generated During the Year 209-2010 up to the Month of June 2009

State : District : BOKARO												
Blocks	No. of Registered		Job Card Issued	Employment demanded		Employment offered		Employment Provided			No. filled muster roll	No. of families complete 100 days
	House Hold	Persons		House Hold	Persons	House Hold	Persons	House Hold	Persons	Persons days		
BERMO	12430	22241	12430	1079	1418	1079	1418	1079	1418	29960	586	
CHANDANKYARI	19898	34568	19898	695	879	694	878	694	878	17243	334	
CHAS	27245	49444	27243	1080	1457	1080	1457	1080	1456	25583	511	
GOMIA	24277	47542	24277	858	1063	858	1063	858	1063	19624	362	
JARIDIH	10379	20559	10379	616	926	616	926	616	926	14141	274	
KASMAR	11885	19145	11885	983	1157	983	1157	983	1157	19063	387	
NAWADIH	17232	29967	17232	691	710	688	707	688	707	11039	246	
PETERWAR	15464	28491	15462	1020	1407	1020	1407	1020	1407	16948	356	
Grand Total	138810	251957	138806	7022	9017	7018	9013	7018	9012	153601	3056	

Table No-3.45 ABSTRACT OF PHYSICAL & FINANCIAL PROGRESS UNDER NREGA YEAR- 2008-209

District- Bokaro

Month : March 2009.

NREGA

Sl. No	Name of the District	FINANCIAL									PHYSICAL							
		O.B.as on 1.4.08	Allotted fund in 08-09	Misc. Receipt	Total Fund Avai	Expendi -ture up to previous month	Expendi -ture during the month	Total Expendi ture	Balance	%age for expen	Total taken up scheme on as 1.4.08	Scheme taken durig 08-09	Total No. Schemes	Scheme completed up to previous month	Scheme completed up to during the mont	Total No. of Scheme completed	No of onging schemes	%age for complete scheme
1	2	3	4	5	6	7	8	9	10	11	12	13	14	15	16	17	18	19
BOKARO		1207.452	4914.240	7.492	6129.184	311.21	507.45	3624.66	2504.52	59.14	3905	2214	6119	2534	164	2698	3421	44.09

Table No-3.46

Cumulative Financial Progress under NREGA from the Year 2005-2006 to March 2009		
Total Available fund (From 05-06 to 08-09) (Rs. In Lacks)	Total Expenditure up to March 2009 (Rs. In Lacks)	%age of Expenditure against total Avai. Fund
8226.460	6256.590	76.05

Source: Deputy Development Commissioner, Bokaro.

Table No-3.47 District Rural Development Agency, Bokaro

Month :- March 2009

Compiled Report

Year:- 2008-2009

Sl	Name of the Scheme	Financial Progress (Rs. In Lacks)											Physical Progress							
		Opening Balance as on 1 st April	Release		Total	Other Receipts	Total funds Available	Up to the previous month	During the month	Total Expendi ture	Balance Amount	% Expendi ture of Available fund	Pending Schemes of Previous Year (1 st April)	No. of Works Undertaken (year 08-09)	Total Scheme	No. of Works			No. of works in progress	% completed Schemes of total Schemes
			Central	State												Up to the Previous	During the Month	Total		
1	MP-LADS	29.12	290.00	0.00	290.00	10.00	329.12	250.96	19.53	270.49	58.63	82.19	23	146	169	93	13	106	63	62.72
2	MLS(GEN)	309.37	675.00	0.00	675.00	0.00	984.37	581.61	78.97	660.85	323.79	67.11	161	354	515	271	58	329	186	63.88
3	MLA(LOKJAL)	65.38	225.00	0.00	225.00	0.00	290.38	169.96	21.11	191.07	99.31	65.80	71	252	323	135	47	182	141	56.35

Source: Deputy Development Commissioner, Bokaro.

Table No-3.48 ABSTRACT OF PHYSICAL & FINANCIAL PROGRESS UNDER SGSY

District- Bokaro

Month : March 2009

Sl. No.	Name of the District	OB as on 01.04.08	Allotted fund in 08-09	Misc. Receipt	Total Fund Avai.	Expenditure up to previous	Expenditure during the month	Total Expenditure	Balance	% age for expen.
	BOKARO	345.86	533.92	2.09	881.87	571.48	5.45	576.93	304.94	65.42

Source: Deputy Development Commissioner, Bokaro.

**Table No-3.49 Searanjayanti Gram Swarozgar yojna
Physical Achivement
Selp-Help Groups (SHGs)**

State : Jharkhand

Year : 2008-09

March 2009

Sl No	Name of the DRDA	No. of SHGs Formed		No of SHGs that have defunct since inception	No. of SHGs Passed Grade I		No. of SHGs Passed Grade II		No. of SHGs Taken up Economic Activities				No. of women SHGs Formed		No of Women SHGs that have activities during the year	No of BPL families that have corossed the poverty line
		Total since 1.4.99	During the current year upto the mont		Total since 1.4.99	During the current year upto the mont	Total since 1.4.99	During the current year upto the mont	After Gr-I		After Gr-II		Total since 1.4.99	During the current year upto the mont		
									Total since 1.4.99	During the current year upto the mont	Total since 1.4.99	During the current year upto the mont				
1	2	3	4	5	6	7	8	9	10	11	12	13	14	15	16	17
1	Bokaro	1543	862	126	833	288	366	80	539	114	398	59	1490	820	440	1460
	Total	1543	862	126	833	288	366	80	539	114	398	59	1490	820	440	1460

Source: Deputy Development Commissioner, Bokaro.

Table No-3.50 ABSTRACT OF PHYSICAL & FINANCIAL PROGRESS UNDER IAY 80% & 20%

District :- Bokaro

Month :- March 2009.

District	Type of Scheme	FINANCIAL			PHYSICAL	
		Allotted fund in 2008-09	Total fund avai.	Total Expenditure	Total No of Schemes	Total No. of scheme completed
BOKARO	80%	1163.67	1657.00	903.09	4631	2907
BOKARO	20%	290.92	657.21	299.33	3196	2195
TOTAL :-		1454.59	2332.21	1202.42	7827	5102

Source: Deputy Development Commissioner, Bokaro.

Table No-3.51 NO. OF BPL FAMILIES (2002-07)

<i>Sl No.</i>	<i>Name of the Block</i>	<i>No. of Household Families</i>	<i>No. of BPL Families (Revised)</i>
1	Chas	34891	15231
2	Chandankyari	30661	14731
3	Jaridih	15208	3754
4	Kasmar	13674	10005
5	Peterwar	20499	15419
6	Gomia	23842	8038
7	Bermo	5256	4808
8	Nawadih	25964	12731
	Total :-	169995	84717

Table No-3.52 Co-Operative of Ditricht

Type of Societies	Total No. of District
<i>Forest Labour Co-Operative</i>	00
<i>Consumer Co-Operative store</i>	03
<i>SHG Co-Operative</i>	01
<i>Milk Co-Operative</i>	13
<i>Industrial Co-Operative</i>	25
<i>Trosport Co-Operative</i>	26
<i>Irrigation Co-Operative</i>	00
<i>Primary Consumer Co-operative</i>	27
<i>Other Co-Operative</i>	57
<i>PACS</i>	65
<i>Housing Co-Operative</i>	27
<i>LAMPS</i>	00
<i>Labour Co-Operative</i>	62
<i>Bajar Co-Operative</i>	00
<i>Fisherman's Co-Operative</i>	24
<i>Weaver's Co-Operative</i>	08
<i>Women's Development Co-Operative</i>	04
<i>Credit Co-Operative</i>	19

Table No-3.53 LIST OF NGO'S WORKING IN BOKARO DISTRICT

Sl No.	Name of NGO	Working Block
1	Hindustanm yuva samiti, Barpokhar	Chas
2	Adhunik mahia utthan samiti	
3	Mahila Jan Shakti sangathan	
4	Raj Development society	
5	Sitijan foundation, Ranchi	
6	Jan Chetna manch, Chandankiyari	Chandankiyari
7	Seemanchal Jan Kalyan sang, Chandankiyari	
8	Suryoday grameen vikash, Chandankiyari	
9	Mahila Sishu Jan Kalyan Kendr, Ispat nagar	
10	Sri Amar Sanskar Kalyan Kendr, Jainamore	Jaridih
11	Aina	Kasmar
12	Pradan, Petarbar	Petarbar
13	Janjagran	
14	Utkars	
15	Jan Sarokar, Gomia	Gomia
16	Berojagar yuva manch, Bermo	Bermo
17	Sahiya, Nawadih	Nawadih

Table No-3.54 List of private Organization/NGOs & their activities during 2008-09

Sl No.	Name of NGOs	Specialization	Activities during 2008-09	Working Block
1	Raj Development Society	Micro finance Agriculture Extension	SHG Promotion, Skill development livelihood, Vegetable Cultivation.	Chas, Jaridih & Paterbar
2	Mahila Jan Swasthhy shishu kalian Kendr	Training for Child development programme/ chlenek center	Medicine plantation, Skill development, Training Programme. Hiv Ais Awareness Programme.	Chas
3	Mahila Jan Shakti sangathan, Bokaro.	SHG- women empowerment	SHG Promotion, Skill Development EDP income generation & livelihood .	Chas
4	Citizen Foundation	Watershed management & Women empowerment	Watershed Development EDP on food processing DPAP Programme.	Chas,
5	Suryoday Gramin Vikas samiti.	SHG. Women empowerment	SHG Formation & linkages skill development training programme.	Chandankiyari.
6	Simanchal Jan Kalyan Samiti	SHG Agriculture Development Medicine plantation,, watershed development through saving & credit Entrepreneurship development programme.	SHG formation & linkages with bank farmer club, watershed development Horticulture, Income generation activity & Woman empowerment development programme, Total sanitation camp programme.	Chandankiyari, Bermo & Peterbar
7	Shri Amar Sanskar Kalyan Kendr	Women Empowerment & water & sanitation campaigh .	SHG promotion, income generation Training for ICDS worker Total sanitation campaigh & livelihood .	Jaridih
8	Machwara yuva manch	SHG. Women empowerment	Prototype, programme, skill development & in come generation, training of SHG,	Jaridih & Gomia
9	Pradan	Micro finance/ SHG, watershed Irrigated Agriculture, Natural Recourse Management , poultry tasar, silk production, rainfed Agriculture, Training and capacity building.	Natural recourse management, livelihood enhancement, empowerment of women people organization promotion, training & capacity building.	Paterbar, Kasmar, Jaridih , Bermo & Nawadih
10	AINA	SHG, Women empowerment Agriculture development.	Formation of SHG unite linkages farmers club, skill development in come generation activity, livelihood training programme	Kasmar
11	Jharkhand Hill resource development Society	SHG/ women empowerment Total sanitation compaigh	SHG formation & linkages animal husbandry training programme fishery development, pigry	Nawadih

12	SAHIYA	SHG Promotion Entrepreneurship development training programme.	Facilitation of RSVY food processing training fishery development.	Nawadih
13	Jan Jagran Kendr	Watershed management Entrepreneurship development, Agriculture development	SHG formation, watershed development, irrigation. IWDP, Ranchi	Peterbar.
14	Utakash	Women empowerment, SHG, Agriculture development	Formation of SHG skill development, income generation activities.	Peterbar
15	Berojgar Yuva Manch	Women empowerment. SHG training Awareness generation programme.	Formation of SHG skill development income generation activities.	Bermo.

Table No-3.65
बोकारो जिले में उर्वरक बिक्रेताओं की सूची।

क्र० सं०	बिक्रेता एवं थोक बिक्रेता का नाम	प्रखंड/जिला का नाम	अनुज्ञापि सं०	अनुज्ञापि की बैधता की तिथि	अनुज्ञापि की बैधता की तिथि की सामप्ति की स्थिति में की गयी कार्रवाई की अद्यतन स्थिति
1	मेसर्स किसान बीज भंडार (थोक बिक्रेता)	महाबीर चौक, चास, बोकारो	21/27.03.2003	31.03.2011	-
2	मेसर्स कृषि केन्द्र, पेटरवार	पेटरवार, बोकारो	13/2006-07	31.03.2009	-
3	मेसर्स सरदार बीज भंडार, पेटरवार	पेटरवार, बोकारो	15/2006-07	31.03.2009	-
4	मेसर्स किसान बीज भंडार	पेटरवार, बोकारो	17/2006-07	31.03.2009	-
5	अध्यक्ष मधुकरपुर कृ० शाख सहयोग समिति	मधुकरपुर, बोकारो	22/2006-07	31.03.2009	-
6	अध्यक्ष दादू कमलापुर प्रा० कृ० सहयोग समिति	कमलापुर, बोकारो	23/2006-07	31.03.2009	-
7	मेसर्स कृषि केन्द्र न्यू मार्केट, तेनुघाट	तेनुघाट, बोकारो	24/2006-07	31.03.2009	-
8	मेसर्स किसान बीज भंडार,	महाबीर चौक, चास, बोकारो	25/2006-07	31.03.2010	-
9	मेसर्स चास पैक्स चास	चास, बोकारो	01/2007-08	31.03.2009	-
10	मेसर्स चिकसिया गोपालपुर पैक्स	चास, बोकारो	02/2007-08	31.03.2010	-
11	मेसर्स असाड़ी बाउरी	चास, बोकारो	03/2007-08	31.03.2010	-
12	गोर्वधन बीज भंडार,	चन्दनकियारी, बोकारो	05/2007-08	31.03.2010	-
13	मेसर्स एम० सी० बीज भंडार	चन्दनकियारी, बोकारो	06/2007-08	31.03.2010	-
14	मेसर्स गणेश फीउल्स,	भंडारीडीह, बोकारो	07/2007-08	31.03.2010	-
15	मेसर्स किसान खाद भंडार	चास, बोकारो	01/1999-00	31.03.2011	-
16	मेसर्स कृषि खाद भंडार	बरमसिया, बोकारो	139/21.01.2003	31.03.2011	-
17	मेसर्स चन्द्रा पैक्स	चन्दनकियारी, बोकारो	04/2005-06	31.03.2011	-
18	मेसर्स डाबरपुण्डरु पैक्स लि०	डाबरपुण्डरु, बोकारो	05/2005-06	31.03.2011	-
19	मेसर्स हाईब्रीड भंडार	जैनामोड़, बोकारो	01/2008-09	31.03.2009	-
20	मेसर्स बी० के० मीनरल्स इन्डस्ट्रीयल एरिया	बोकारो इस्पात नगर, बोकारो	02/2008-09	31.03.2011	-
21	मेसर्स हरिक्रांति बीज भंडार	साड़म, बोकारो	03/2008-09	31.03.2010	-

22	मेसर्स न्यू हरा-भरा कृषि केन्द्र	जैनामोड़, बोकारो	04/2008-09	31.03.2011	-
23	मेसर्स धरती बीज भंडार	पेटरवार, बोकारो	05/2008-09	31.03.2011	-
24	मेसर्स सुनिता खाद भंडार	खैराचातर, बोकारो	06/2008-09	31.03.2011	-
25	मेसर्स कृषि विकास बीज भंडार	जोधाडीह मोड़, बोकारो	07/2008-09	31.03.2011	-
26	मेसर्स नेफेड केन्द्र	गागी, पेटरवार, बोकारो	08/2008-09	31.03.2011	-
27	मेसर्स सुनील बीज भंडार	पेटरवार, बोकारो	09/2008-09	31.03.2011	-
28	मेसर्स सरदाहा जयतारा पैक्स	सरदाहा, चास, बोकारो	10/2008-09	31.03.2011	-
29	मेसर्स कनक चास पैक्स लि०	आगरडीह, चास, बोकारो	11/2008-09	31.03.2011	-
30	मेसर्स कुरा दुधीगाजर लि०	कुरा, चास, बोकारो	12/2008-09	31.03.2011	-
31	मेसर्स बिजुलिया बुढ़ी विनोर पैक्स लि०	बिजुलिया, बोकारो	13/2008-09	31.03.2011	-

बोकारो जिले में बीज बिक्रेताओं की सूची।

क्र० सं०	बिक्रेता एवं थोक बिक्रेता का नाम	प्रखंड/जिला का नाम	अनुज्ञप्ति सं०	अनुज्ञप्ति की बैद्यता की तिथि	अनुज्ञप्ति की बैद्यता की तिथि की सामप्ति की स्थिति में की गयी कार्रवाई की अद्यतन स्थिति
1	सरदार बीज भंडार	पीण्ड्राजोरा, चास, बोकारो	12/2006-07	31.03.2009	-
2	मेसर्स किसान बीज भंडार	पेटरवार, बोकारो	14/2006-07	31.03.2009	-
3	मेसर्स कृषि केन्द्र न्यू मार्केट	तेनुघाट, बोकारो	17/2006-07	31.03.2009	-
4	मेसर्स किसान बीज भंडार	चास, बोकारो	18/2006-07	31.03.2009	-
5	मेसर्स प्रसाद बीज भंडार	तेलीडीह, चास, बोकारो	01/30.04.2007	31.03.2010	-
6	मेसर्स कृषि केन्द्र	नावाडीह, बोकारो	02/30.04.2007	31.03.2010	-
7	मेसर्स यादव बीज भंडार	कथारा, बोकारो	03/30.04.2007	31.03.2010	-
8	मेसर्स हरीक्रांति बीज भंडार	झिरके बस्ती	04/2007-08	31.03.2010	-
9	मेसर्स महतो बीज भंडार	बुन्दियाटांड, चास	05/25.05.2007	31.03.2010	-
10	मेसर्स गोर्वधन बीज भंडार	चन्दनकियारी, बोकारो	06/25.05.2007	31.03.2010	-
11	मेसर्स महतो बीज भंडार	तुपकाडीह	07/25.05.2007	31.03.2010	-
12	मेसर्स पंकज बीज भंडार	पेटरवार	08/25.05.2007	31.03.2010	-
13	मेसर्स कुशवाहा बीज भंडार	पेटरवार, बोकारो	09/25.05.2007	31.03.2010	-
14	मेसर्स महतो बीज भंडार	पेटरवार, बोकारो	10/25.05.2007	31.03.2010	-
15	मेसर्स किसान बीज भंडार	फुसरो, बोकारो	11/25.05.2007	31.03.2009	-
16	मेसर्स एम सी० बीज भंडार	चन्दनकियारी, बोकारो	12/12.09.2007	31.03.2010	-
17	मेसर्स गनेश फीउएल्स	भंडारीडीह, चन्द्रपुरा	13/26.10.2007	31.03.2010	-
18	मेसर्स किसान खाद भंडार	पेटरवार, बोकारो	07/25.04.1996	31.03.2011	-
19	मेसर्स न्यू हरा भरा कृषि केन्द्र	जैनामोड़, बोकारो	14/1999-2000	31.03.2011	-
20	मेसर्स कृषि खाद भंडार	बरमसिया, चन्दनकियारी	116/2003	31.03.2011	-
21	मेसर्स चन्द्रा पैक्स,	चन्दनकियारी, बोकारो	03/12.08.2005	31.03.2011	-

22	मेसर्स कृषि केन्द्र	पेटरवार, बोकारो	02/2005-06	31.03.2011	-
23	मेसर्स किसान बीज भंडार	तुपकाडीह, बोकारो	01/2008-09	31.03.2011	-
24	मेसर्स हाइब्रीड बीज भंडार	जैनामोड़, बोकारो	02/2008-09	31.03.2009	-
25	मेसर्स धरती बीज भंडार	पेटरवार, बोकारो	03/03.05.2008	31.03.2011	-
26	मेसर्स सुनील बीज भंडार	पेटरवार, बोकारो	04/2008-09	31.03.2011	-
27	मेसर्स सुनिता खाद भंडार	खैराचातर, कसमार, बोकारो	05/2008-09	31.03.2011	-
28	मेसर्स मेहता सीड सेन्टर	पेटरवार, बोकारो	06/2008-09	31.03.2011	-
29	मेसर्स चन्दनकियारी व्यापार मंडल	चन्दनकियारी, बोकारो	08/2008-09	31.03.2011	-
30	मेसर्स कृषि विकास बीज भंडार	जोधाडीह मोड़, चास, बोकारो	09/2008-09	31.03.2011	-

बोकारो जिले में कीटनाशक बिक्रेताओं की सूची।

क्र० सं०	बिक्रेता एवं थोक बिक्रेता का नाम	प्रखंड/जिला का नाम	अनुज्ञापि सं०	अनुज्ञापि की बैधता की तिथि	अनुज्ञापि की बैधता की तिथि की सामप्ति की स्थिति में की गयी कार्रवाई की अद्यतन स्थिति
1	मेसर्स कृषि खाद बीज भंडार	बरमसिया, चन्दनकियारी, बोकारो	DNB-IV-124	31.12.2009	-
2	मेसर्स गोर्वधन बीज भंडार	चन्दनकियारी, बोकारो	02/2007-08	31.12.2010	-
3	मेसर्स प्रसाद खाद बीज भंडार	तेलीडीह, चास, बोकारो	04/2007-08	31.12.2010	-
4	मेसर्स कृषि केन्द्र,	पेटरवार, बोकारो	02/2005-06	31.12.2010	-
5	मेसर्स कुशवाहा कृषि बीज भंडार	तेलीडीह, चास, बोकारो	11/25.05.2006	31.12.2010	-
6	मेसर्स हाईब्रीड बीज भंडार	जैनामोड़, बोकारो	01/16.04.2008	31.12.2009	-
7	मेसर्स धरती बीज भंडार	पेटरवार, बोकारो	02/30.04.2008	31.12.2009	-
8	मेसर्स सुनिता खाद बीज भंडार	खैराचातर, कसमार, बोकारो	03/28.05.2008	31.12.2009	-
9	मेसर्स कृषि विकास बीज भंडार	जोधाडीह मोड़, चास, बोकारो	04/05.08.2008	31.12.2009	-
10	मेसर्स बोकारो मार्केटिंग	चास, बोकारो	05/12.08.2008	31.12.2009	-
11	मेसर्स सुनील बीज भंडार	पेटरवार, बोकारो	06/01.02.2008	31.12.2009	-

Table No-3.56 **Communication System**

The communication system and Total number of Post office block wise functioning in the district are given below

Communication System

Name of Blocks	No. of Post Office
Chas	40
Chandankiyari	16
Jaridih	11
Kasmar	10
Peterbar	14
Gomia	09
Bermo	09
Nawadih	18
Total :-	127

<i>No. of Tele Exchange</i>	<i>15</i>
<i>No. of PCOs</i>	<i>1260</i>
<i>No. of Radio station</i>	<i>01</i>
<i>No. of Durdarshan kendr</i>	<i>01</i>
<i>No. of Railway Station/holt</i>	<i>23</i>
<i>No. of City Booking office</i>	<i>02</i>

Table No :- 3.57 Block wise number of ponds and water area of Bokaro District

No. of Govt. ponds Block wise and area

Sl No.	Name of Blocks	No. of Ponds	Areas in Acre.
1	Chas	623	1806.56
2	Chandankiyari	752	1450.00
3	Jaridih	32	74.42
4	Kasmar	76	160.15
5	Peterbar	26	72.42
6	Gomia	28	74.42
7	Bermo	28	74.09
8	Nawadih	64	140.55
	Total:-	1629	3852.61

No. of Privet ponds in the District :- 2979

Fish Production in the Year 2008-09 :- 5466 MT.

Total No. of Fishry GB Co-operative socities:-21

No. of fisherman :- 16000